



Changing Places Requirements



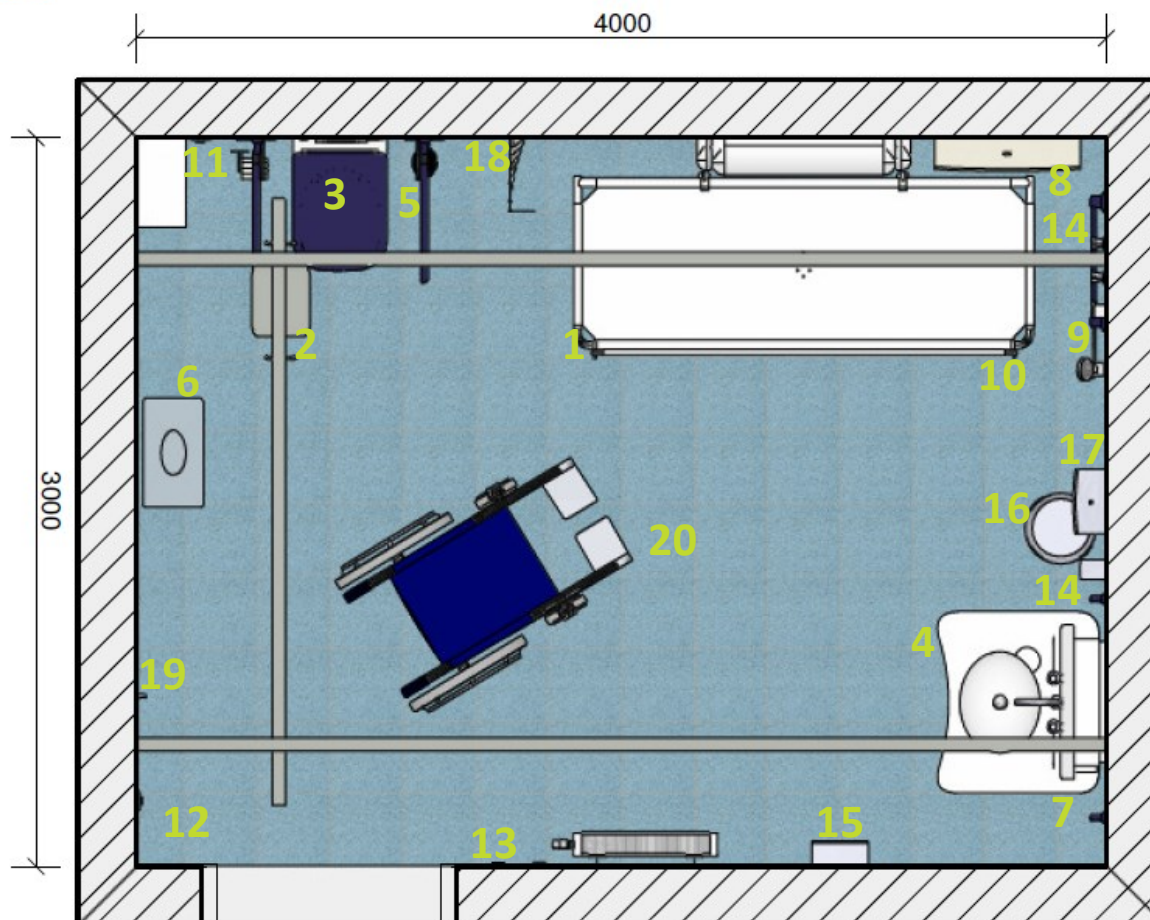
1. [1800mm Height Adjustable Changing Table](#)



2. [XY Ceiling Track Hoist \(H Frame\)](#)



8. Large Paper Roll Dispenser



3m x 4m Changing Places Layout Example (BS8300:2009)



3. [Peninsular WC](#)



4. [Wash Basin \(Preferably Height Adjustable\)](#)



18. [Privacy Screen / Curtain](#)

- | | | | |
|--|---|--------------------------------------|------------------------------|
| 1. Height Adjustable Changing Table (1800mm minimum) | 6. Large Sanitary Disposal Bin | 11. Emergency Alarm Pull Cord | 16. Waste Bin |
| 2. XY Ceiling Track Hoist | 7. Full Length Mirror | 12. Emergency Alarm Pull Cord | 17. Paper Towel Dispenser |
| 3. Peninsular WC | 8. Large Paper Roll Dispenser | 13. Emergency Alarm Reset Button | 18. Privacy Screen / Curtain |
| 4. Wash Basin (preferably height adjustable) | 9. Shower (optional) | 14. Horizontal & Vertical Grab Rails | 19. Coat Hooks |
| 5. Drop Down Support Arms & Vertical Grab Rails | 10. Shower Floor Drain (if shower is present) | 15. Hand Dryer | 20. 12sqm Room |