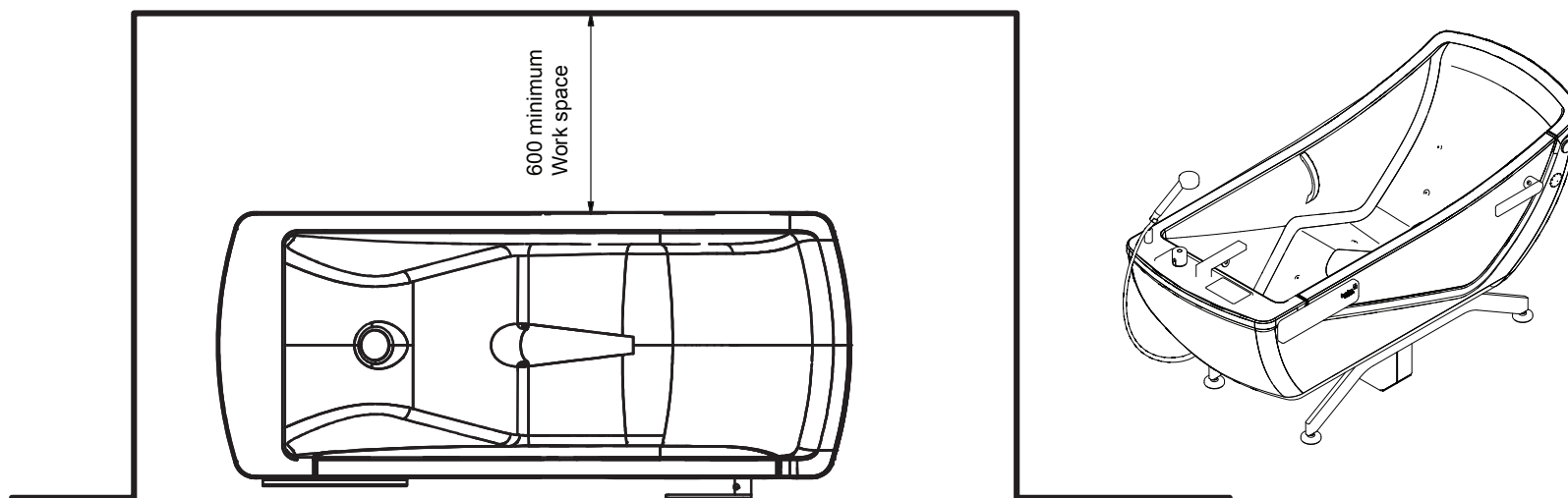
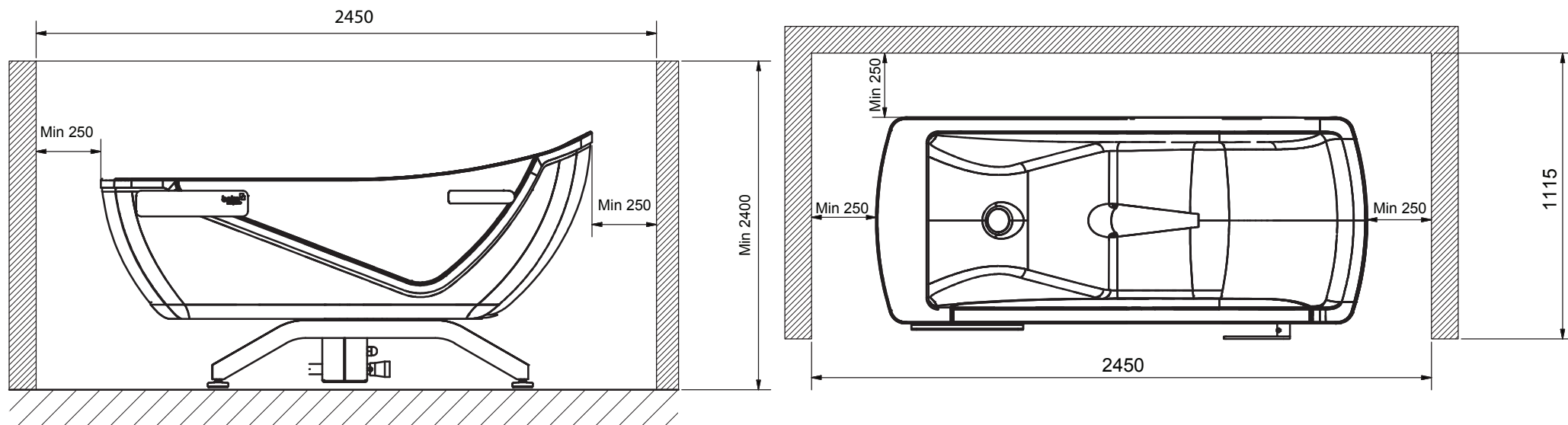
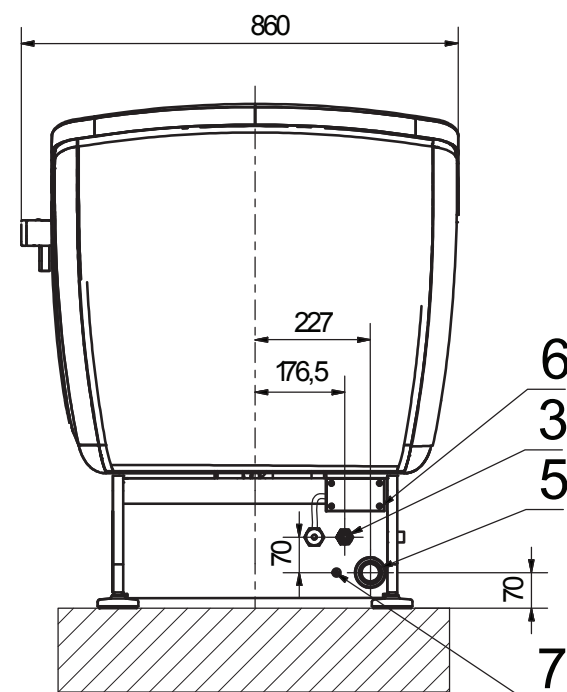
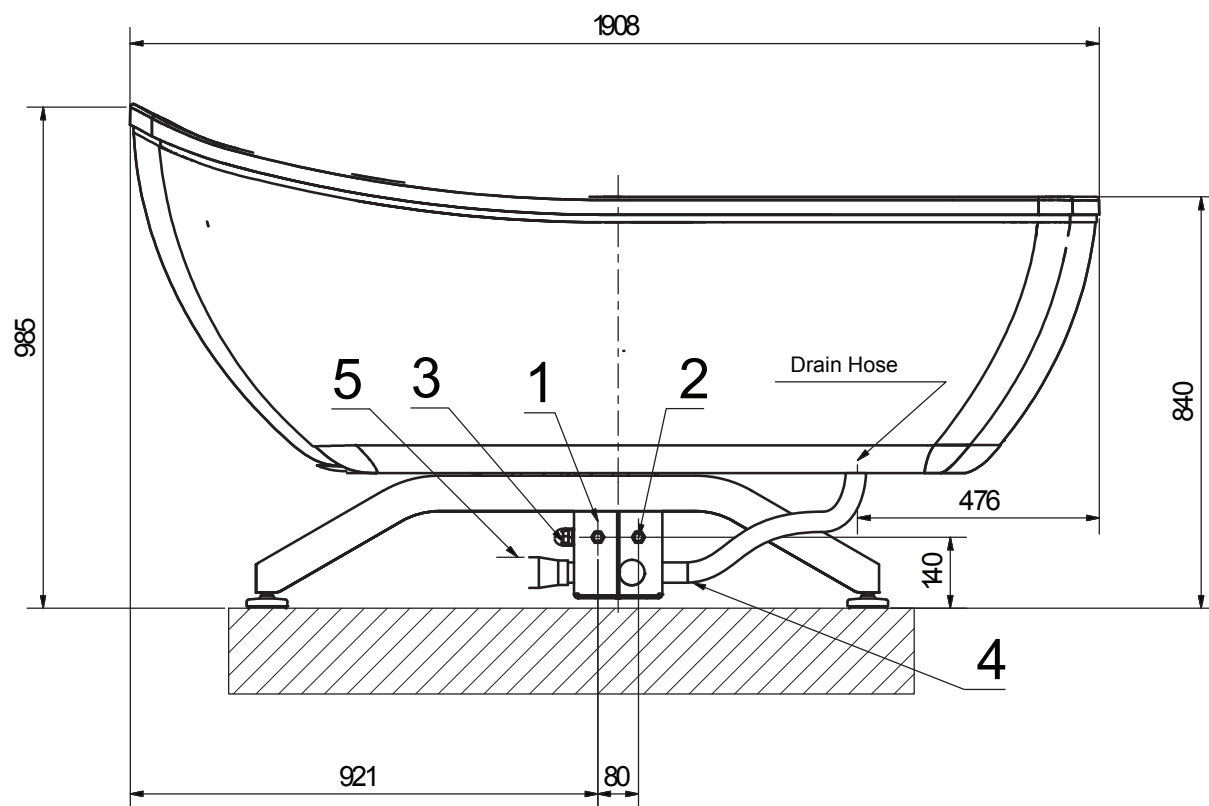


# Avero Motion

## Space required

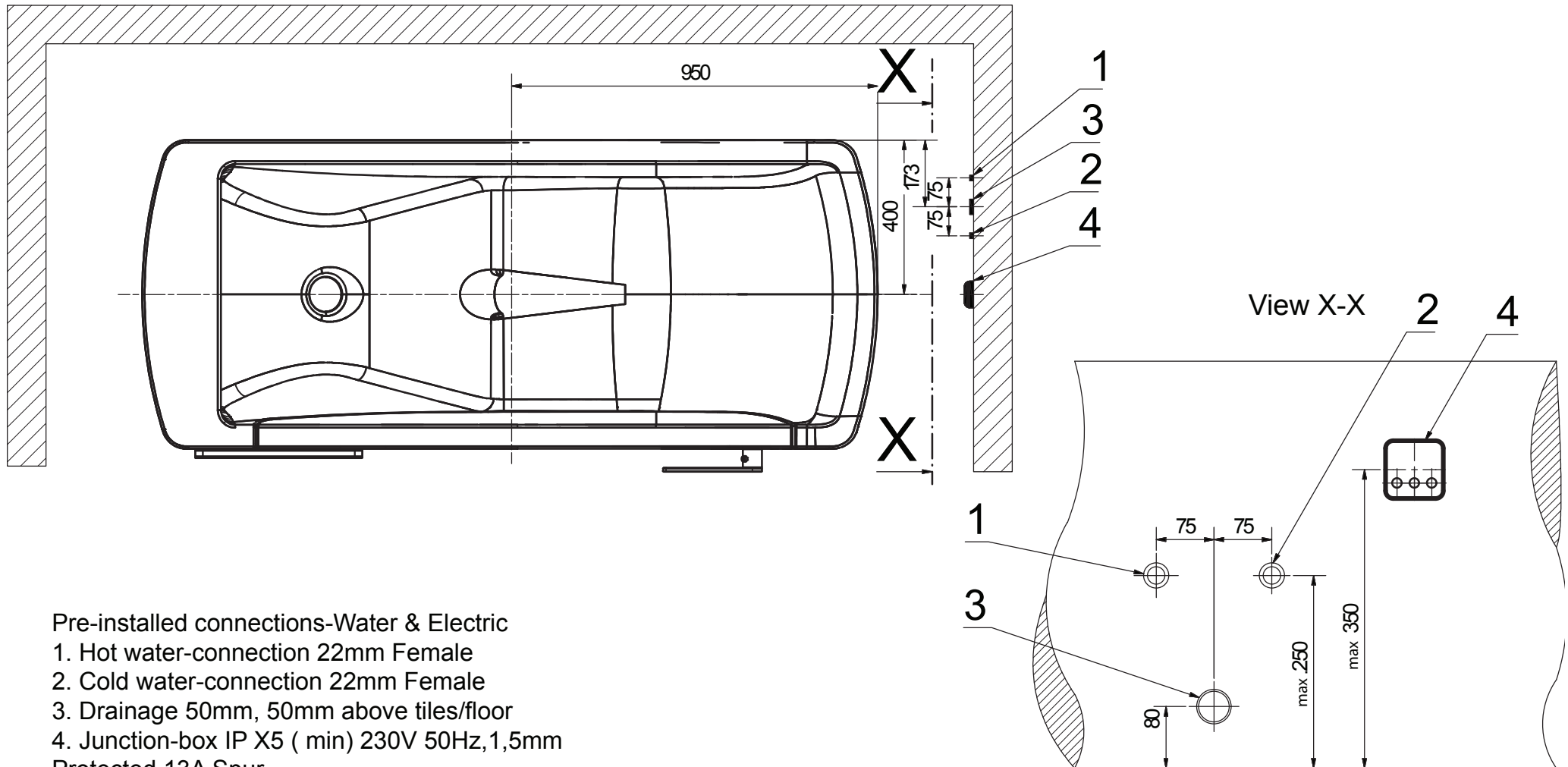


# Connections to the Bath



Connections to the Bath		
No.	Description	Key
1	Cold water isolator	1/2" Ball valve
2	Hot water isolator	1/2" Ball valve
3	Connection Gantry system	1/2" Sleeve
4	Flexible waste hose connection	Din 40-40mm
5	Waste Connection 50mm	Din 50-50mm
6	Terminal Box	1.5mm cable
7	Earth bonding connection	M6

## End connection

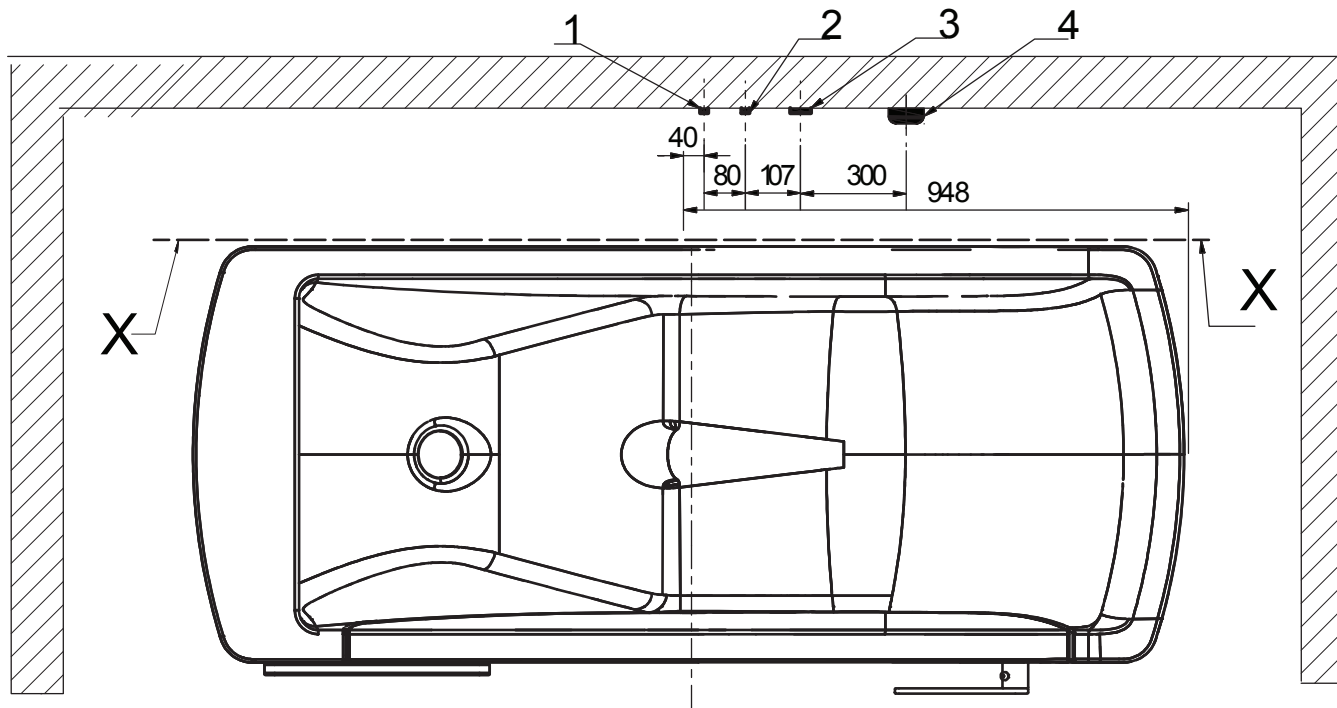


Pre-installed connections-Water & Electric

- 1. Hot water-connection 22mm Female
  - 2. Cold water-connection 22mm Female
  - 3. Drainage 50mm, 50mm above tiles/floor
  - 4. Junction-box IP X5 ( min) 230V 50Hz, 1,5mm Protected 13A Spur
- Pre-installed RCD  
Isolator valves cold/hot water.

Electric connections must be made to comply with local regulations.

## Side Connection



### Pre-installed connections-Water & Electric

1. Hot water-connection 22mm Female
2. Cold-water-connection 22mm Female
3. Drainage 50mm, 50mm above tiles/floor
4. Junction-box IP X5 ( min) 230V 50Hz, 1,5mm

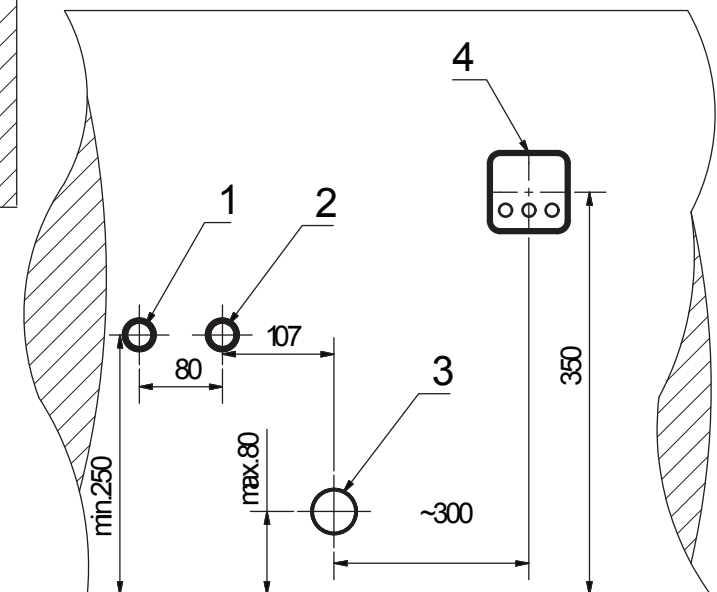
Protected 13A Spur

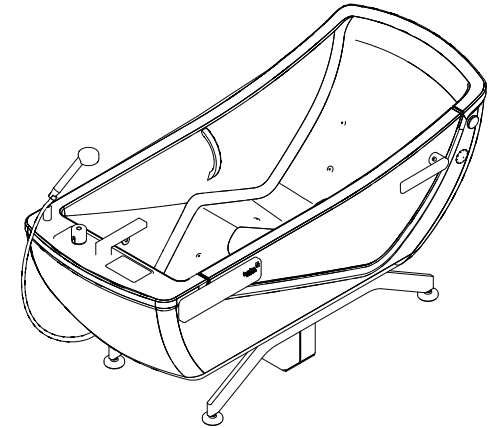
Pre-installed RCD

Isolator valves cold/hot water.

Electric connections must be made to comply with local regulations.

View X-X





## Astor Bannerman Group installations only

### **Important**

We confirm that fittings are as described in this Pre-installation document document and:

There are obstructions in the area in which the bath is to be installed.

Floors are flat and level and a 230 Volt mains power supply (not temporary supply), hot and cold water supplies and waste pipe will be connected and operational BEFORE the engineer visits.

By Signing this form you are confirming to the Astor Bannerman group:

That the site has been prepared in accordance with the specifications detailed in this document and that the site is ready for us to proceed with the installation.

You also confirm that you understand and agree that if we are unable to carry out the installation after we have arrived on site any waiting time will be charged at a rate of £80 per hour, and an additional installation charge will apply for any revisit and you agree to pay that charge.

Signature:	Name:(Print)
Organisation:	Position:
Site Address:	Job No.