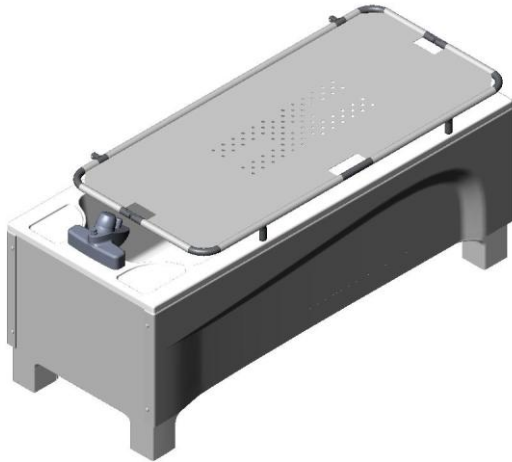




## Neatfold Stretcher



# Owners Manual and Instructions for Use



IMPORTANT  
READ THIS  
MANUAL  
BEFORE USE

### Guarantee

This product is guaranteed against all defects in manufacture for a period of one year.

This does not affect your statutory rights

Warranty number:

## **Operating Instructions Neatfold Stretcher**

The safe working load for a Neatfold stretcher is 190kg, this weight should not be exceeded.

The Neatfold stretcher is designed as a support platform fitted to the top of a bath. It can be quickly and conveniently folded and stowed vertically against the wall if the bath is against a wall, or through 270 degrees alongside the edge of a bath maximising the space available in the room.

### **Using the Neatfold stretcher**

To unstow the Neatfold stretcher from a vertical position: Reach across the bath and hold the centre of the stretcher frame at the point where the material has been removed to expose the painted frame. Lift the assembly slightly and pull it towards you. A small jolt will be felt as the stretcher becomes horizontal, this is normal & part of the function of the stretcher. Place the stretcher onto the rim of the bath; the Neatfold stretcher is now ready for use. To unstow from the 270degree position, firstly rotate the stretcher through 180 degrees and then treat as per the vertically stowed option (above).

To stow the Neatfold: With one hand, hold the stretcher in the centre at the point the framework is exposed. With the other hand, hold the edge of the stretcher such that by applying a little upward force, the stretcher begins to fold. Allow the stretcher to fully fold in half and then move to one of the two stowed positions as appropriate.

### **Operating instructions for optional guard if fitted**

To engage the optional guard: Ensure that the stretcher is in the horizontal position. Locate the two vertical tubes of the guard assembly into the black nylon receivers previously fitted to the

stretcher. To test the correct engagement, the guard should be pulled forward (toward you) & resistance should be felt.

To disengage the guard: lift the guard vertically and stow where convenient or previously arranged.

## Caution

The persistent or heavy use of oil based products may adversely affect the white stretcher material. Oils and other petro-chemical products should be used sparingly and any residue removed immediately.

### Cleaning

The stretcher, frame, guard and guard bumper may be cleaned using most mild cleaning agents. Abrasive cleaners should be avoided in order to maintain the semi-gloss finish of the white high tension stretcher material and the painted finish of the frame. The stretcher and frame may be cleaned using a high temperature pressure washer or non-chemical steam cleaner but under no circumstances should it be placed in an autoclave.

**Chemical agents must not be used, i.e., drain cleaners, acetone, oven cleaners or acids. Attention should always be paid to instruction labels on the outside of cleaning agent containers.**



Unit 11f, Coln Park

Andoversford

Cheltenham

Glos, GL54 4HJ

Tel: 01242-820820

Fax: 01242-821110

e mail: [sales@astorbannerman.co.uk](mailto:sales@astorbannerman.co.uk)