

Lancashire Changing Places Project Management, Building Work & Installation



Changing Places at Pendle Support, Lancashire—Before, During & After

Pendle Support & Care Services in **Lancashire** provide support to children and adults with learning disabilities, physical disabilities and mental health issues.

An existing bathroom was converted to an accessible **Changing Places** toilet facility as part of the project.

Astor-Bannerman designed the room and gave full project management, completed the building work and installed the Nivano CTE190 **Changing Table**, A2B **Ceiling Track Hoist** and ABW6 **Adjustable Basin** for maximum accessibility.

Established in 2005, **Pendle Support & Care Services** is a specialised domiciliary care agency supporting children and adults with learning disabilities who may have associated physical disabilities and mental health issues.

The team at Pendle Support approached Astor-Bannerman to help incorporate a full Changing Places toilet facility for their visitors and anyone in the area who needs it to help to maintain independence and allow people to have choices about how they live their lives.

Changing Places is a campaign established in 2006 promoting the need for life changing facilities for many thousands of people with profound and multiple learning and physical disabilities who need additional equipment and space to use the toilet safely and with dignity.

Astor-Bannerman provided full project management of the new Changing Places toilet to give complete peace of mind. Following an initial site survey, Astor-Bannerman specified the most suitable equipment to comply with Changing Places standards, designed the layout of the room and completed all the building work and refurbishment as well as installation, commissioning and training of the specialist equipment.

Space was tight for this project so walls were moved as much as possible and wall / ceiling mounted equipment installed in order to maximise the space, still allowing space for a large wheelchair and care givers.

The ceiling hoist was wall mounted which was perfect for installing around an integral ceiling beam. Wall mounted hoists are also useful where ceilings will not accommodate the fittings required for ceiling mounting.





"Our brand new Changing Places facility will now help many local people maintain their independence and dignity."

What Are Changing Places?

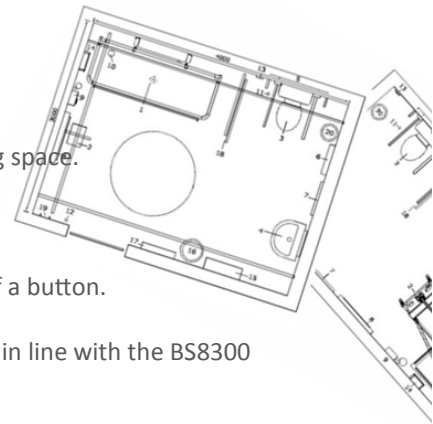
Changing Places include a changing table, hoist and room for 2 carers and are vital facilities for disabled people and their families. They provide a safe and comfortable place to go to the toilet and receive the care needed. Without Changing Places, care becomes virtually impossible and often families have to care for loved ones on dirty toilet floors or stay at home.



What Specialist Equipment is Included?

The new Changing Places facility at Pendle Support features:

- Wall mounted **Nivano** adult changing table which folds away neatly when not in use, maximizing space.
- **A2B** XY ceiling track hoist for full room coverage with unique gravity charging system.
- Height adjustable **ABW6** wash basin with integrated mirror, electrically operated at the touch of a button.
- DocM toilet and shower systems, emergency pull cords, non-slip floor with drain and ancillaries in line with the BS8300 Changing Places Standards



Upon registration of the 880th UK Changing Places toilet facility, Pendle Support Business Manager John McBeth told Astor-Bannerman:

"We knew for some time that there was a need for a changing place facility in our area and have worked hard over the last year or so to make it happen. We are proud to say that our brand new Changing Places facility will now help many local people to maintain their independence and dignity. It really is the jewel in our crown."

Having a state of the art bathroom that will meet the needs of people we support is something we never dreamed of! This much needed facility will help the lives of so many people in our local area and we are proud to say that we have one in our building. We are officially a Changing Place!"

For over 20 years' Astor-Bannerman has built an exceptional reputation within the Social Services and Local Authority Sectors where it is held in the highest regard.



The Nivano CTE190 Folds away neatly when not in use

As specialists in design, manufacture and installation of assisted baths, hoists and changing equipment, Astor-Bannerman offer free site surveys, home demonstrations, expert advice, quotations, CAD room layouts, OT team meetings and much more without obligation.

To see how Astor-Bannerman could help with your Changing Places and home adaptations [contact us](#) today and make use of many of the [free services](#) we provide.

For more information on the full range of bathing solutions available, call 01242 820820, email sales@astorbannerman.co.uk or visit www.astorbannerman.co.uk

Astor-Bannerman (Medical) Ltd Unit 11F Coln Park, Andoversford, Cheltenham, Gloucestershire, GL54 4HJ

sales@astorbannerman.co.uk

01242 820820

www.astorbannerman.co.uk

Active Bathing and Aveso are a part of the Astor-Bannerman (Medical) Ltd Group of Companies

V220617