

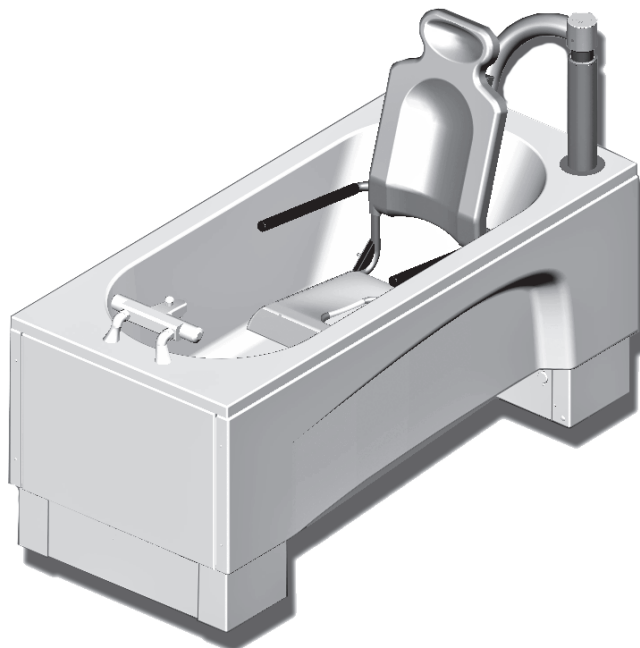
IMPORTANT NOTICE

This document **MUST** be forwarded to your architect or building contractor to ensure that the site is prepared correctly as any mistakes could be extremely costly.



Pre-Installation Document

Syncra Standard Bath

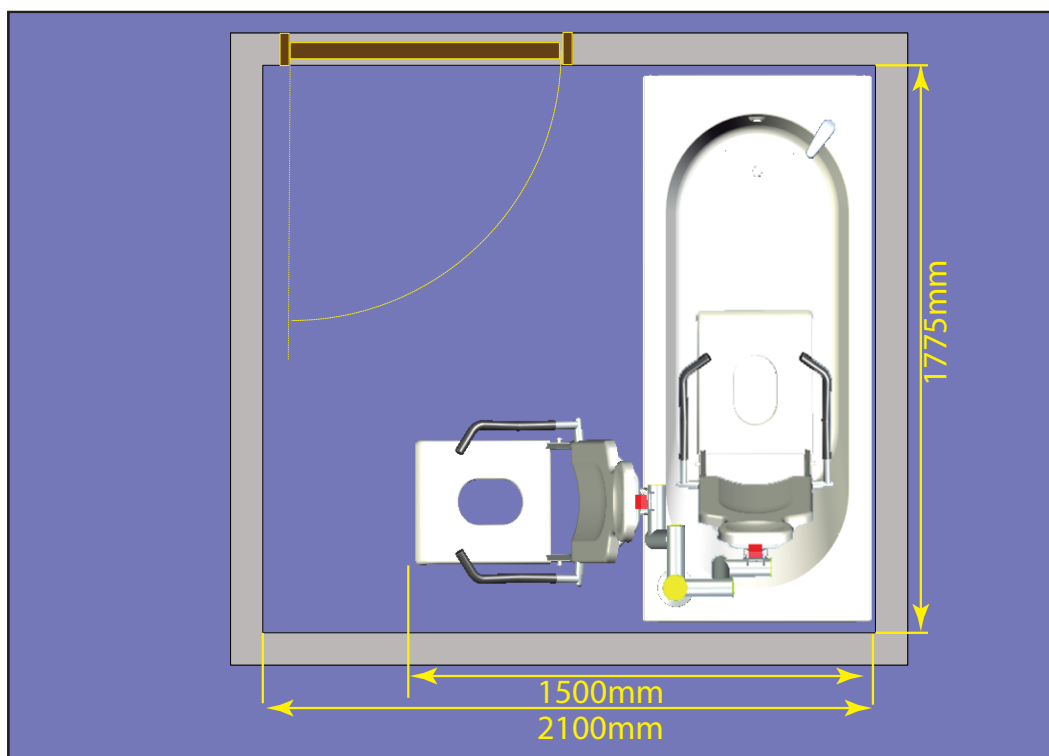
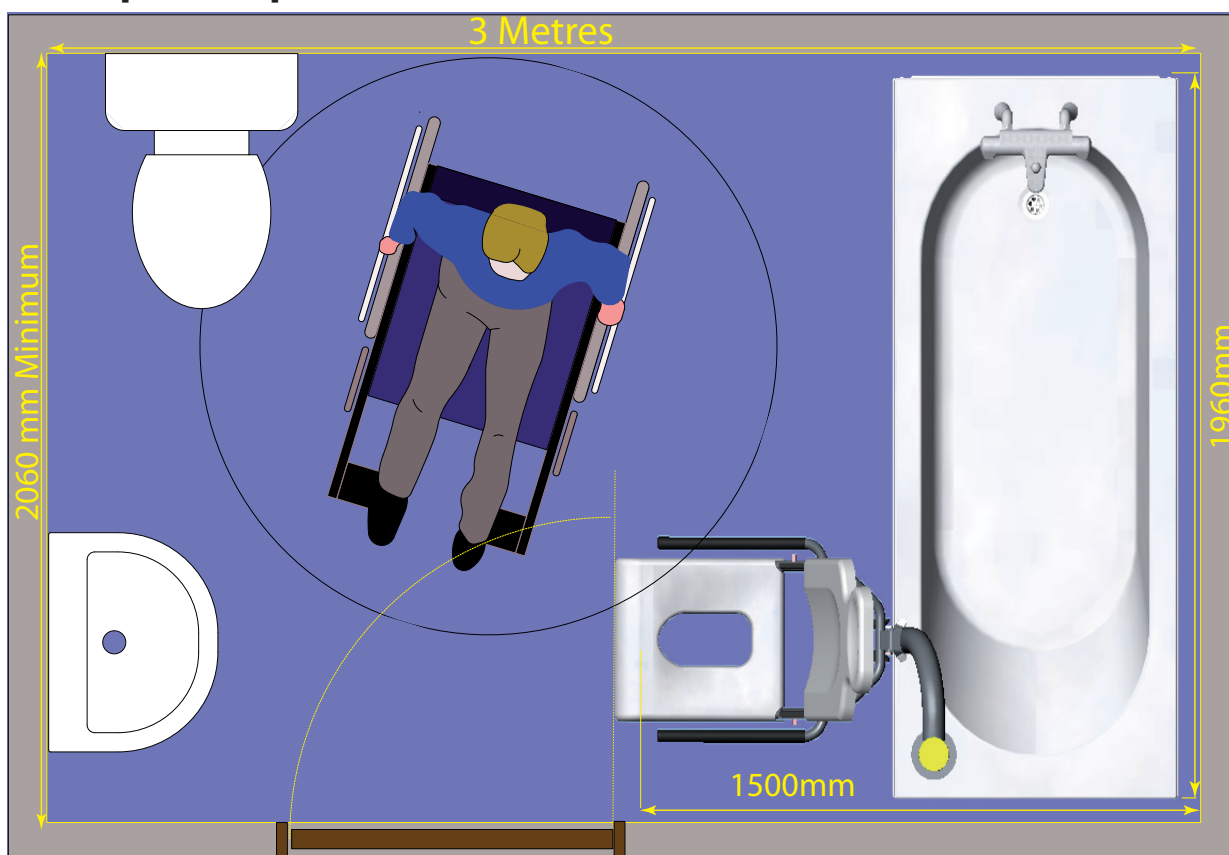


General Site Requirements:- Minimum space requirements

The Diagrams below show the space required to operate the bath.

Wheelchair Access:

Minimum space required.



NOTE:The doorway position relative to the bath, the bath cannot be rotated once in the room

General Site Requirements.

The wall decoration and floor covering must be complete and finished.
Underfloor heating Cannot be fitted beneath the bath

Positioning and fixing the unit.

The Syncra bath needs to be secured to the floor, using 75mm long fixings into concrete. Adjacent walls need to be plumb, flat and clear of obstructions. EG: No Electric showers or towel rails in the area where the height adjustable bath and chair operates. Skirting boards may be left in place and the wall may be tiled.

Fig 1

If the unit is to be installed in an alcove or into a corner the side wall/walls will also have to be clear of obstructions.

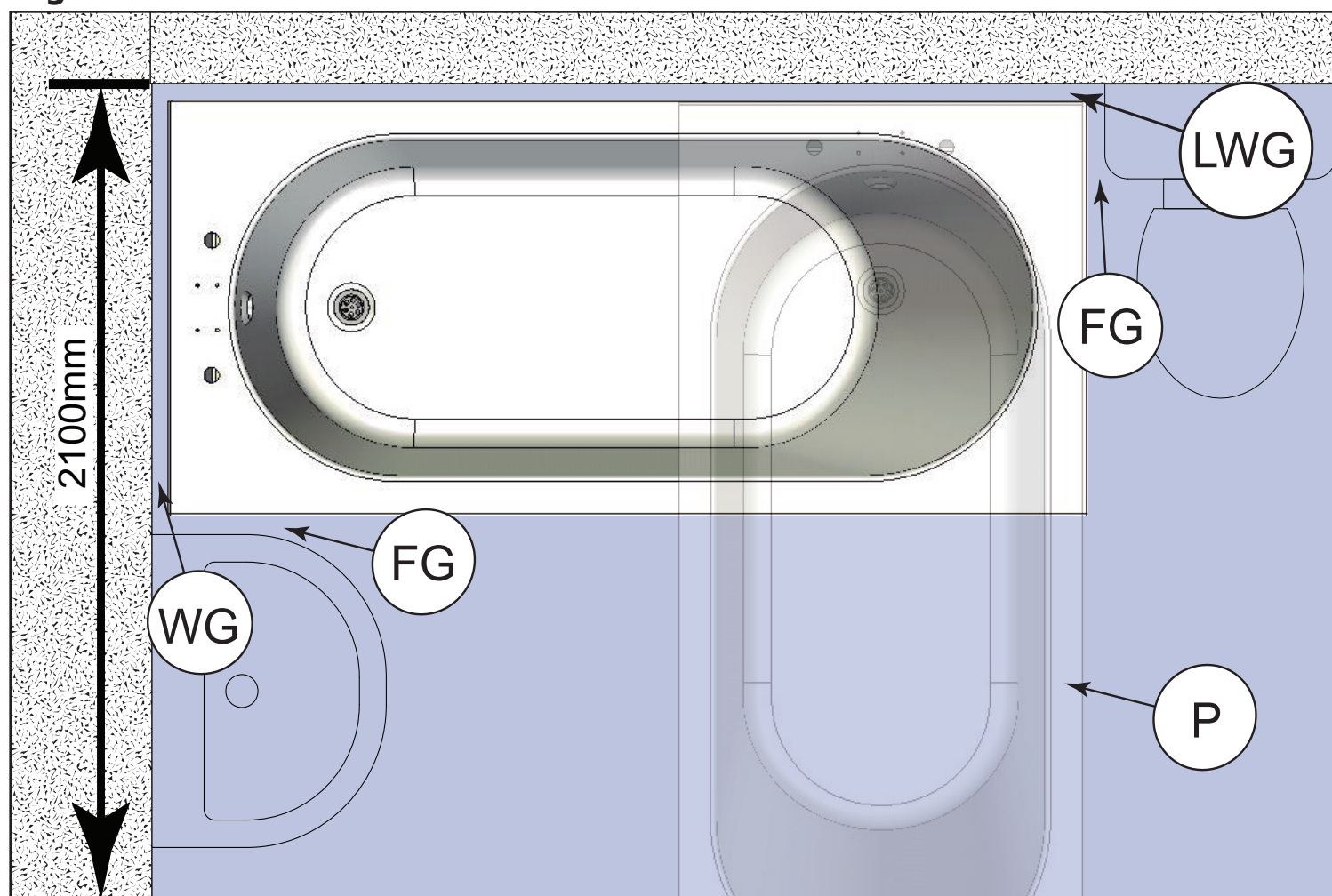
The bath can be fitted as a Corner unit or Peninsular unit (P).

A minimum clearance of 40mm is required against any adjacent walls (WG & LWG) and fixed appliances (FG) including toilets, radiators, sinks and shower units.

Note: There must be enough clearance for the chair to swing out of the bath, 2100mm minimum between walls.

Avoid having the basin fitted as shown below as it will obstruct the clients legs when swinging the chair into the bath.

Fig 1



Positioning and fixing the unit - Continued

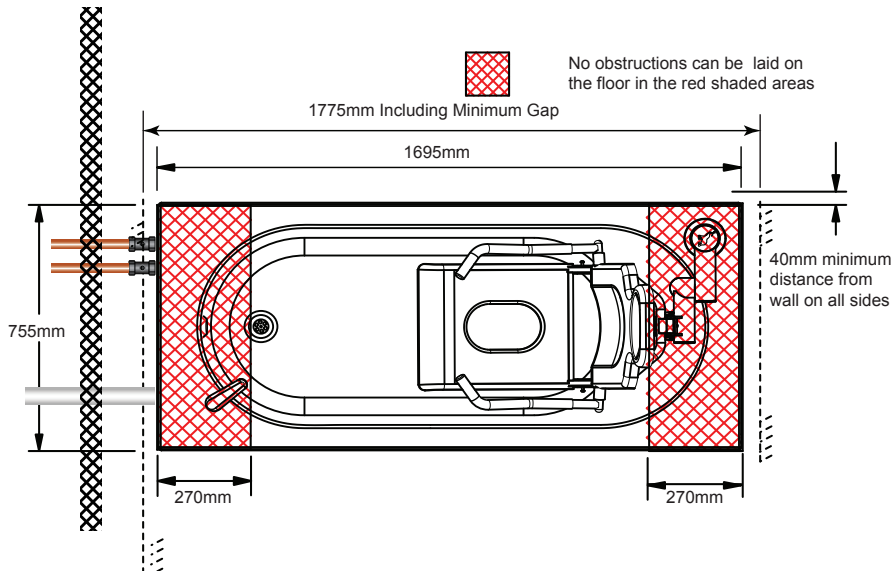
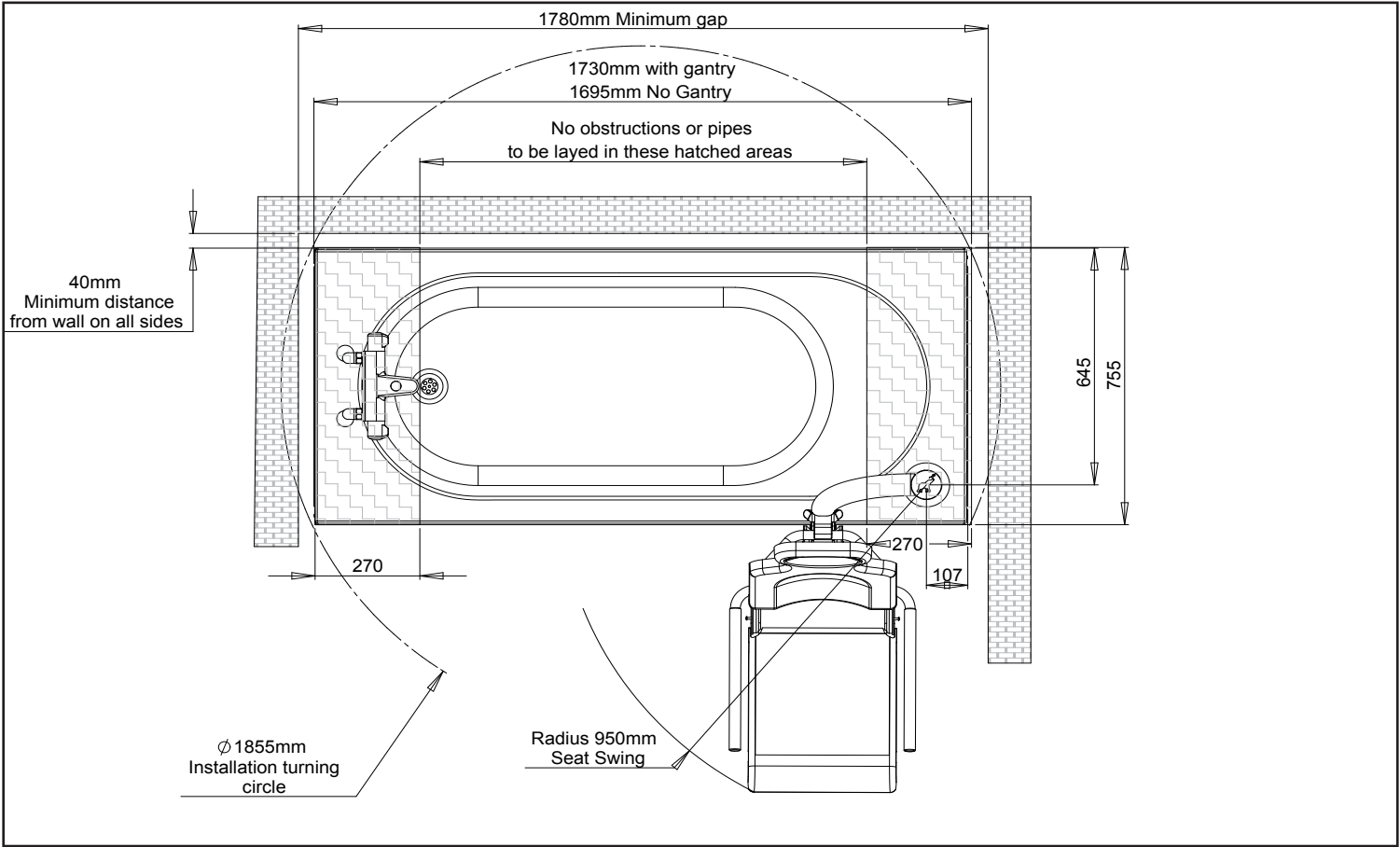
Fig 2

When calculating the footprint of the bath use the diagram below and ensure the clearances are provided at the ends and at the sides.

The red shaded areas must be kept clear of any pipework or wiring.

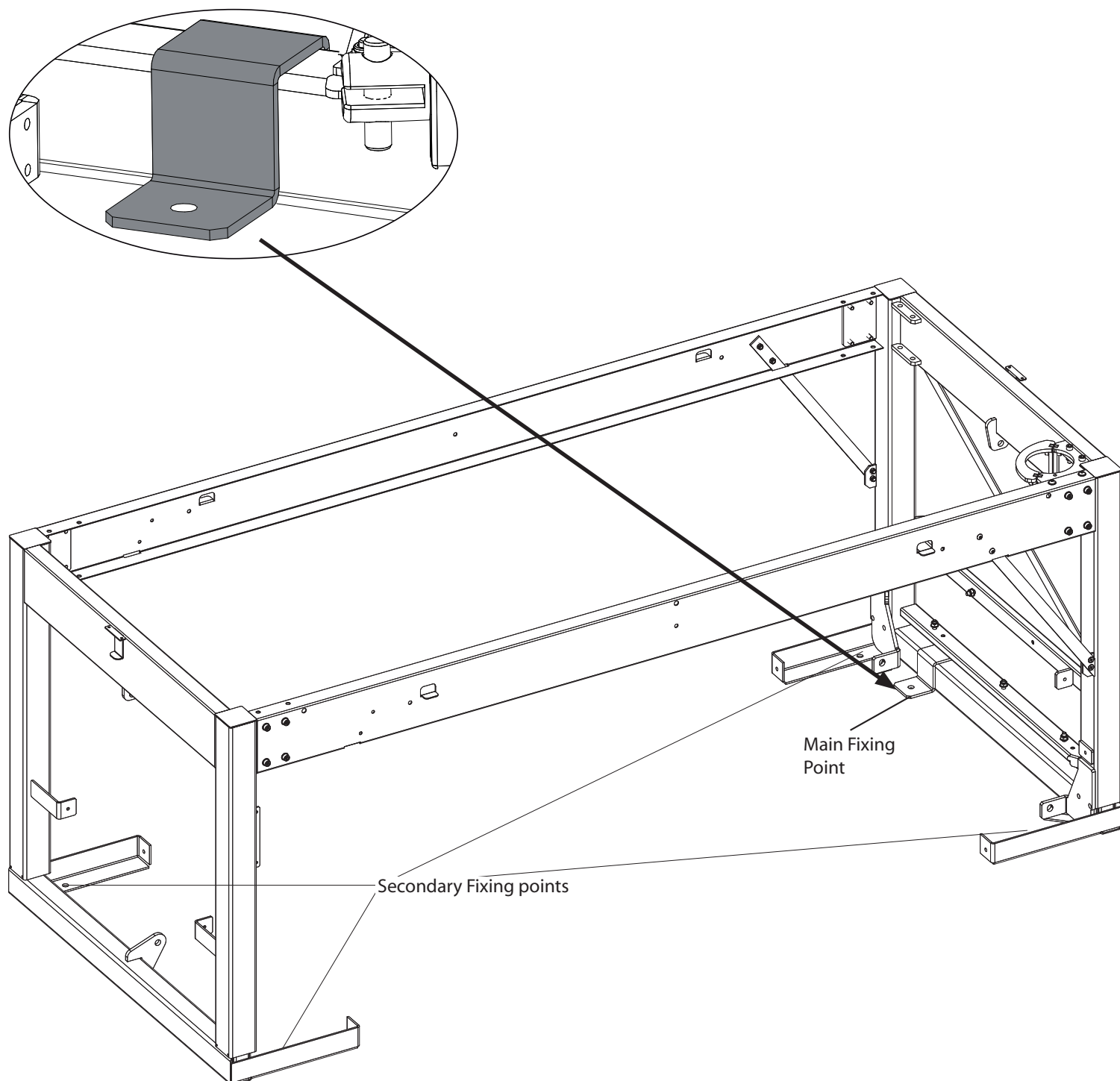
The floor must be strong enough (especially in the foot areas in red) to carry the weight of the bath when full and occupied.

Fig 2



If the floor is concrete (Minimum C20/25) it must be capable of accepting the anchors. For "BISON™" type block and beam floors chemical resin fixings may be required.

Wooden floors will need to be able to accept Coach screws



Plumbing Options

Figs 3 & 4 show the positions for the supply pipes and the waste pipe.

These services must be at the tap end of the bath.

22mm ball type isolation valves (V) should be positioned and orientated exactly as shown but can be fed through the wall (SW) or the floor (SF). See Fig 5. They can also be fed along the wall from either side but must be kept at low level and tight to the wall.

Fig 3

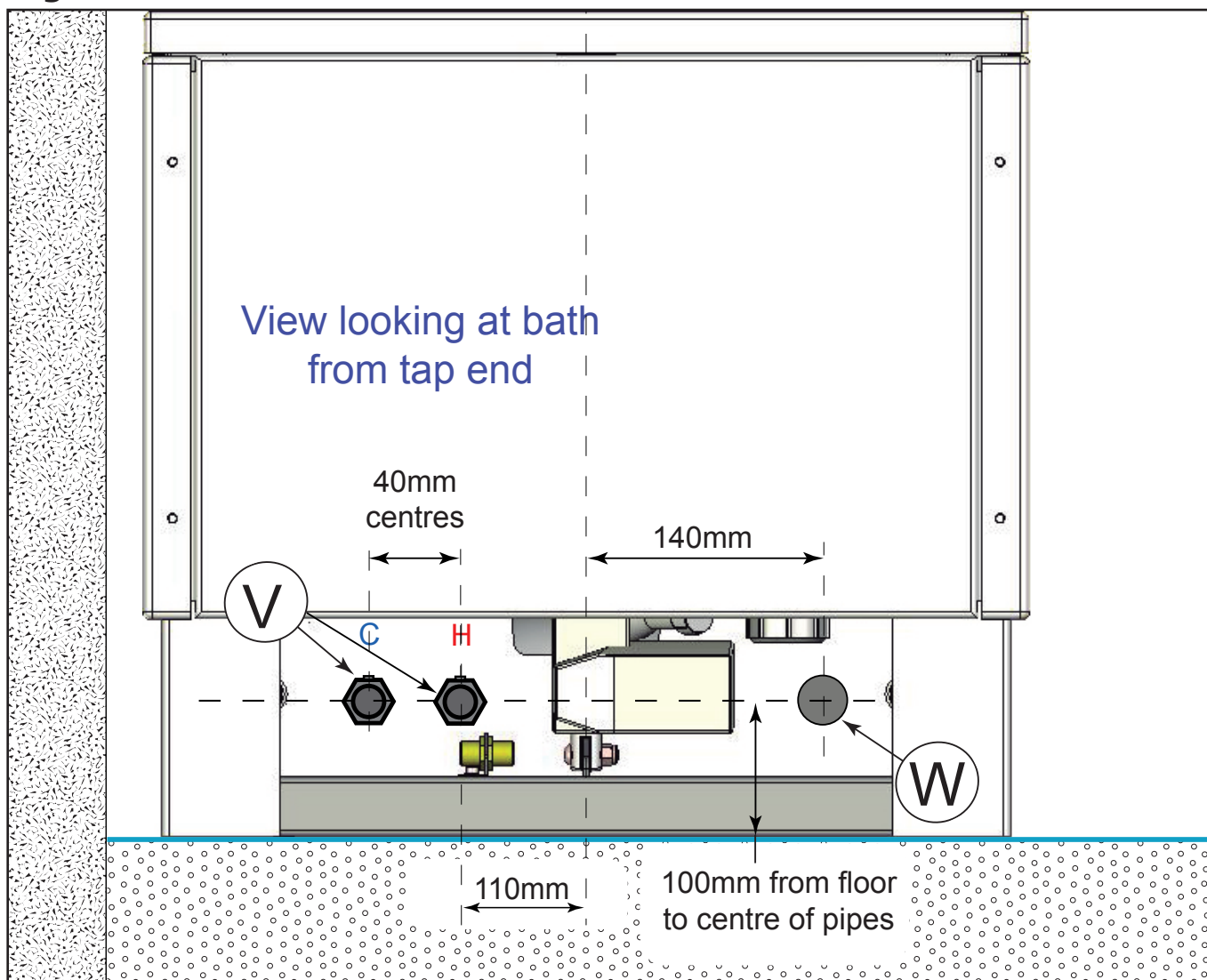
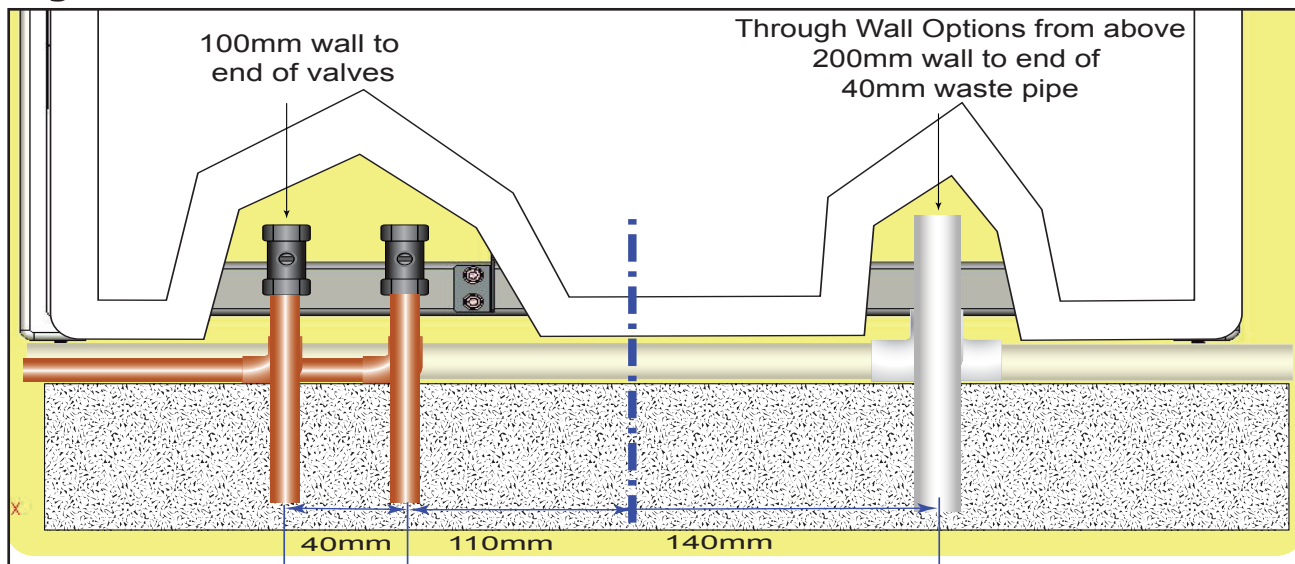
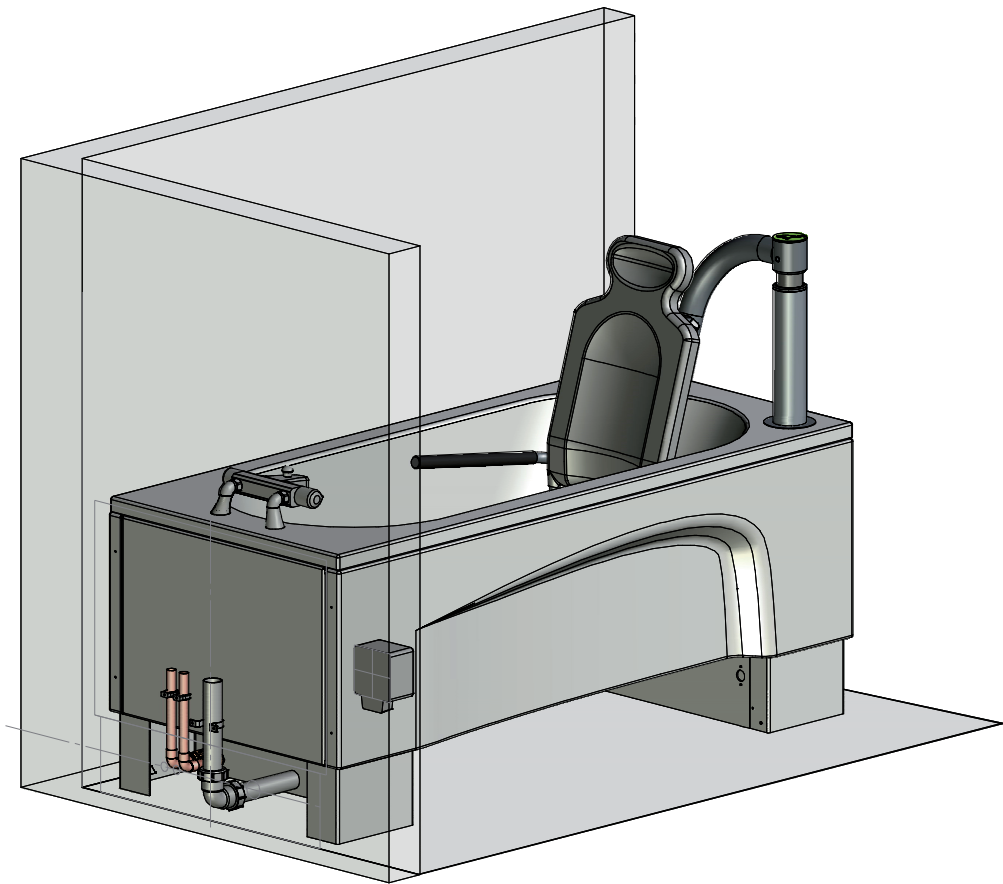
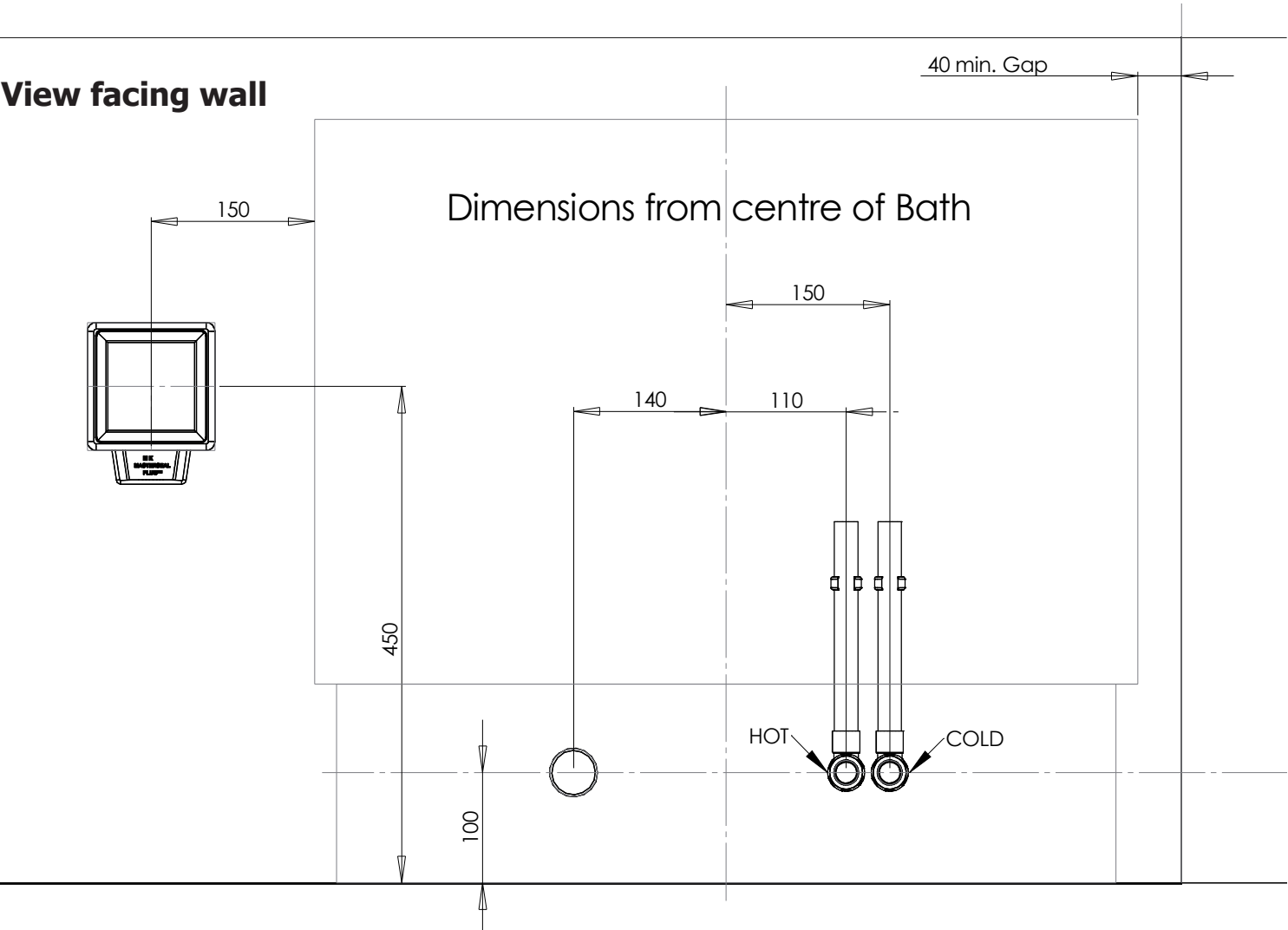


Fig 4



Services Layout

View facing wall



Plumbing Options Continued.

Fig 5 & 6.

If the water service pipes need to be fitted along the wall from a side wall they need to be kept tight against the wall.

If the waste is to be fed along the the wall from a side wall it must be kept tight to the wall and be positioned as shown.

The 40mm waste pipe can be fed through the wall (WW) as shown and cut to the length indicated. It can also be fed through the floor (WF) but must be kept tight to the wall and terminate horizontally in the position shown for (WW).

Figure 5 & 6 viewed from the side

Fig 5

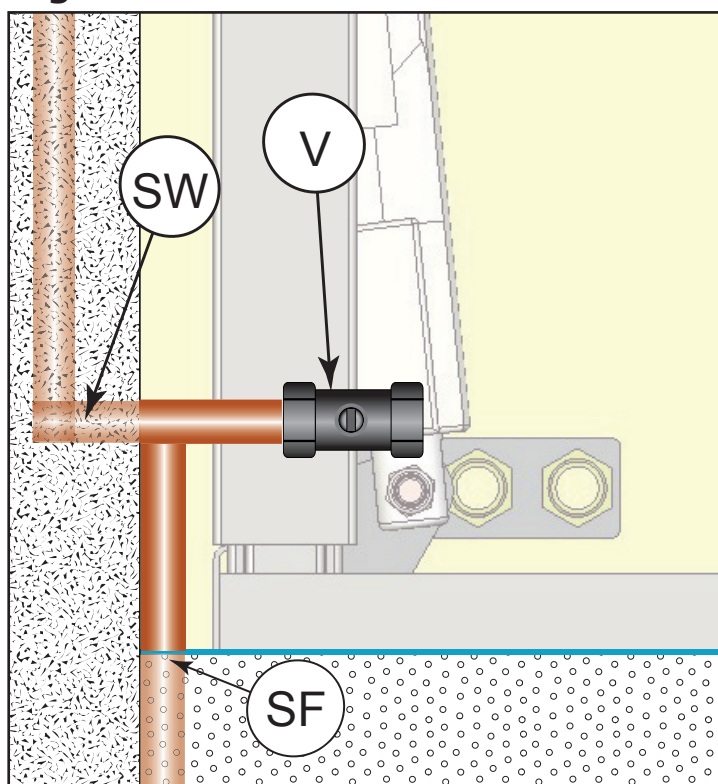
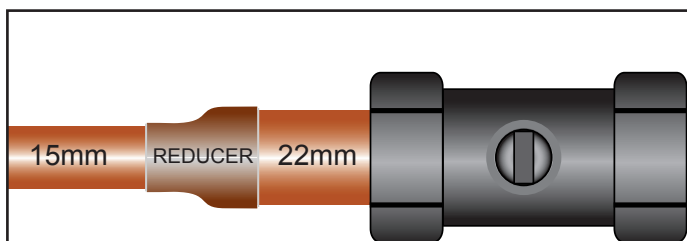
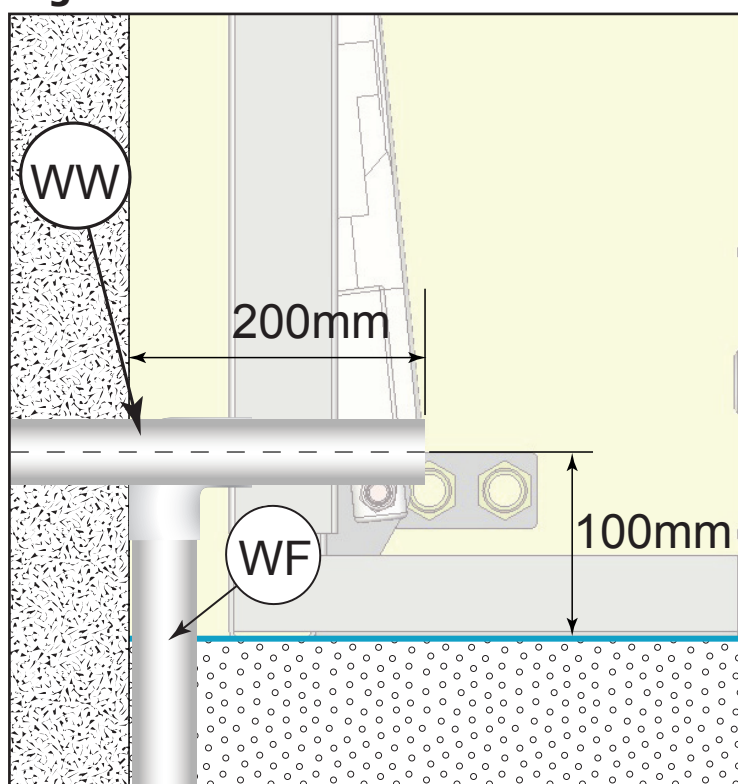


Fig 6



Note: If the site piping is 15mm then this should be expanded to 22mm piping at the valve end to accommodate the valves.

Tap Options

The Syncra bath can be supplied with various tap/mixer sets.

The minimum water pressure on each supply must be 1 bar or above, Maximum of 10 bar with a differential of no more than 5 bar.

Note:

If the bath is fitted with Low Level Taps then the supply pressures must be equal and with a minimum 1 bar.

Electrical Connection.

Fig 7 & 8

The bath requires a 1 off 230 volt, 1.25 kW, waterproof flex outlet, located at either end of the bath in either of the positions shown. Supplied from a protected fused spur.

Fig 7

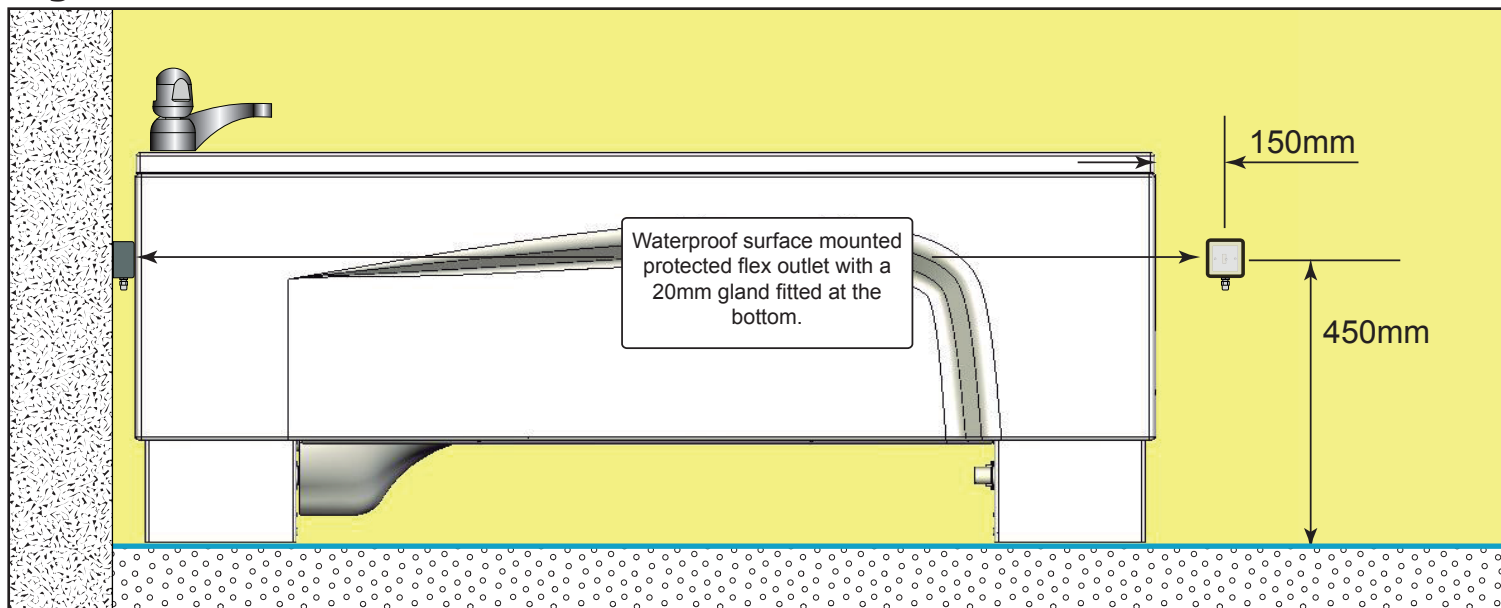
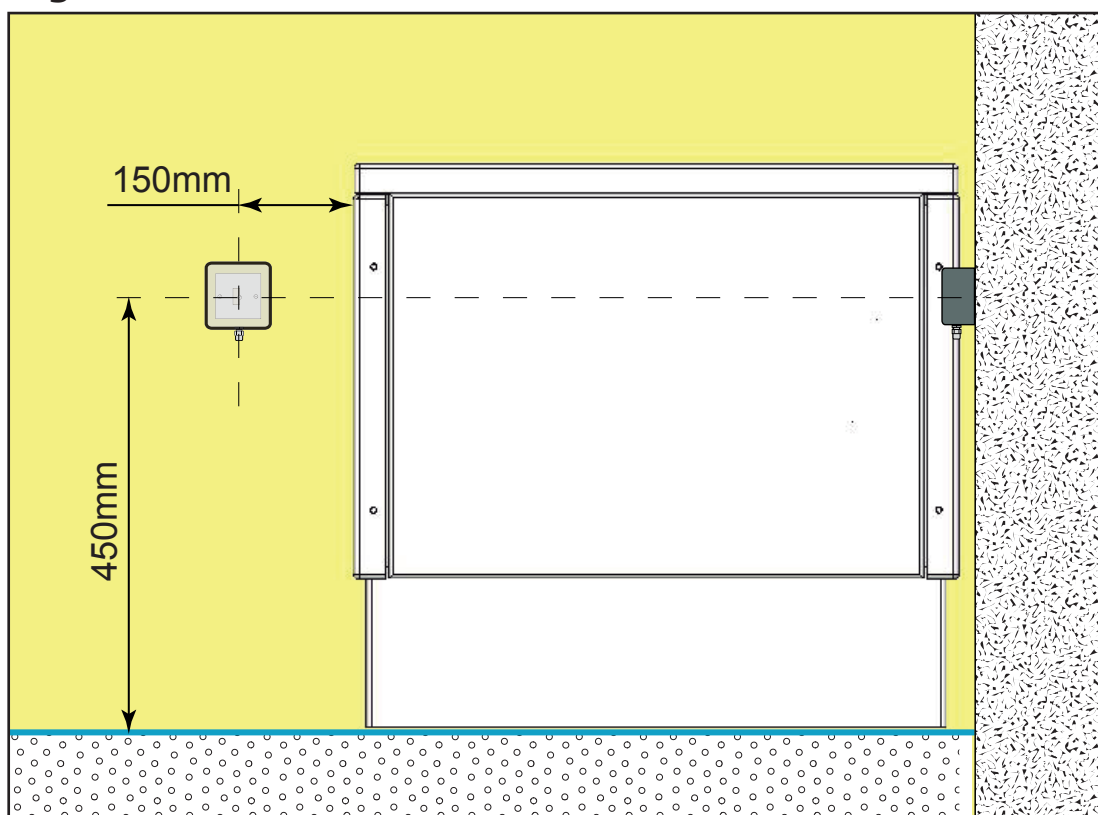


Fig 8



Waterproof outlet
MK Part number
56410 whi or
similar

Technical Information.

Electrics

A.C. Input 220 - 240V~, 50/60Hz, 1.25 kW Maximum.

DC Output, 24v, 8 Amps.

Safe Working Load

Bath: 280 Kilograms

Chair: 150Kg

Length

1695mm.

1775mm required to provide minimum clearance.

Width

755mm

2100mm required to provide minimum clearance for the chair to swing out.

Height Range Bath 700mm Minimum 1000mm Maximum.

Bath Water Capacity

200 litres to overflow.

Water Pressures

A Minimum of 1 bar is required on both Hot and Cold water supplies.

Maximum 10 bar.

Maximum differential between Hot and Cold 5:1.



Unit 11f, Coln Park

Andoversford

Gloucestershire

GL54 4HJ

Tel 01242-820820 Fax 01242-821110

e mail: sales@astorbannerman.co.uk

VAT Reg No. 630609068

Technical Helpline - Direct Telephone Number - 01242 822972