

Changing Places Pod



The Ultimate Stand Alone Changing Places Solution

Over 250,000 people in the UK need a Changing Places Facility in order to access a toilet. Changing Places Pods provide a quick and easy way to install a Changing Places Facility on your grounds without the expense and hassle of building works.

"If you do not have the space to convert an existing room, this stand alone solution is the perfect answer."

83%

of people with a disability avoid inaccessible buildings

1 in 5

people have a disability

£12.1 Billion

spent per year on tourism by people with health conditions

Equipment Included:

- ✓ Full room covering Astor OT200 Ceiling Hoist
- ✓ Height adjustable Astor Invincible or Astor CTX2 Changing Table
- ✓ Height adjustable Astor ABW-CP Wash Basin
- ✓ Peninsular Toilet
- ✓ Privacy Screen



Contact us
for more details

info@astorbannerman.co.uk

01242 820820

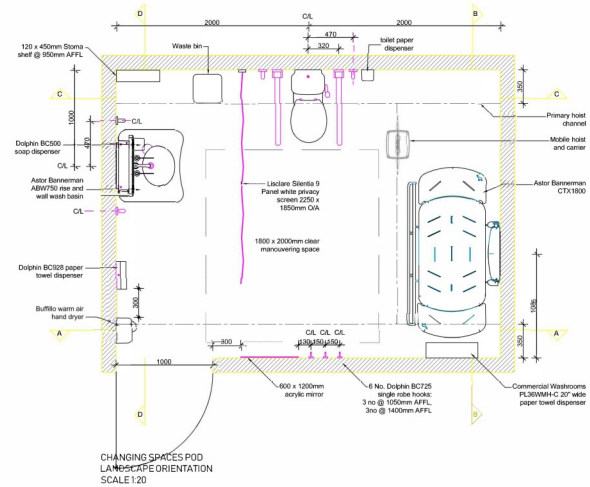
"The Changing Places Pod's one-stop solution providing groundworks and electrical connection made the whole process very easy."

Changing Places Pod

Specification:

A Changing Places Pod comes ready fitted with all specified equipment, designed for use in a public usage facility. It includes a full room covering Astor OT200 Ceiling Hoist, a wall mounted Astor Invincible or CTX2 Changing Table, an Astor ABW-CP Height Adjustable Basin, a pedestal Toilet and all specified ancillary items.

The pods are 12 square metres (4m x 3m) and are available with the door on either the 4m or 3m wall. They are compliant to BS8300-2-2018 standards, have passed through testing with the equipment in situ, and are delivered to site with Astor Bannerman taking care of all groundworks and installation.



Equipment pre-fitted:

It comes complete, ready fitted with all the equipment required to meet Changing Places and BS8300-2:2018 standards, with a compliant layout and design, removing all the hassle from your planning and installation.

Turnkey Solution:

Full turnkey solution from design to installation.

Noticeable - Higher Usage:

In contrast to many internal adaptations, our standalone facilities are highly visible. As a result, they get used more and help to attract new customers.

Hassle free Installation:

They are quick and easy to install, with none of the mess and inconvenience involved with weeks of building works.

Premium products designed for use in a public Changing Places:

Including robust, hygienic Astor Invincible Changing Table and Astor ABW-CP - height adjustable basin, mirror and soap dispenser.

Branding / Design Options:

Changing Places Pods look stunning and can be modified to fit into your environment, or can be branded to form a cohesive part of your infrastructure.

Rigorously tested:

Installed equipment has been rigorously tested in situ for complete peace of mind.

Warranty:

Changing Places Pods have a 10 year structural warranty* and 35+ years life expectancy.

*terms and conditions apply and excluding equipment

Future Proof:

If you ever need to change your business, your Modular Changing Places Pod can travel with you.