



Helping to make sport accessible for all



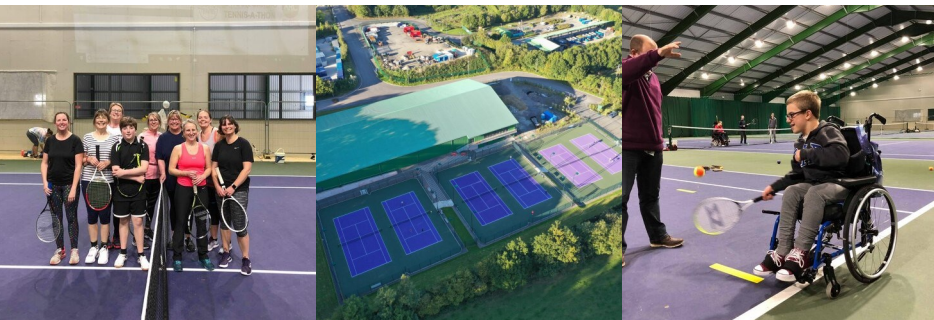
Installation of Changing Places Toilet equipment at Atlantic Racquet Centre, Bideford

BACKGROUND

The Atlantic Racquet Centre (ARC) is a brand new community racquet and fitness centre where everyone can exercise, socialise and learn together. The volunteer led facility is focused on improving the health and wellbeing of all local people. As a community resource the intention was always to install a Changing Places Toilet to make it accessible for as many people s possible.

Key Considerations

- Shower needed for those using sports facilities
- Extra space required for shower seat
- Easy access required from the main court and fitness spaces
- Needed to accommodate those with complex needs



Want more information about Changing Places Toilets?

[Visit our website to find out more](#)

SOLUTION

We supplied a height-adjustable changing table suitable for use with a shower, and a height-adjustable washbasin with integral mirror and soap dispenser, specifically designed for use in public Changing Places Toilets. The room was slightly larger than a standard Changing Places Toilet, which allowed for a spacious shower area with shower seat.

"The club chose to install a Changing Places facility at ARC to ensure that the facility was fully inclusive to all members of our community including the many people with profound disabilities who access the facility every week. It was always the intention to install a CP facility whether it became legislation or not." - Damian Everest, Project Manager



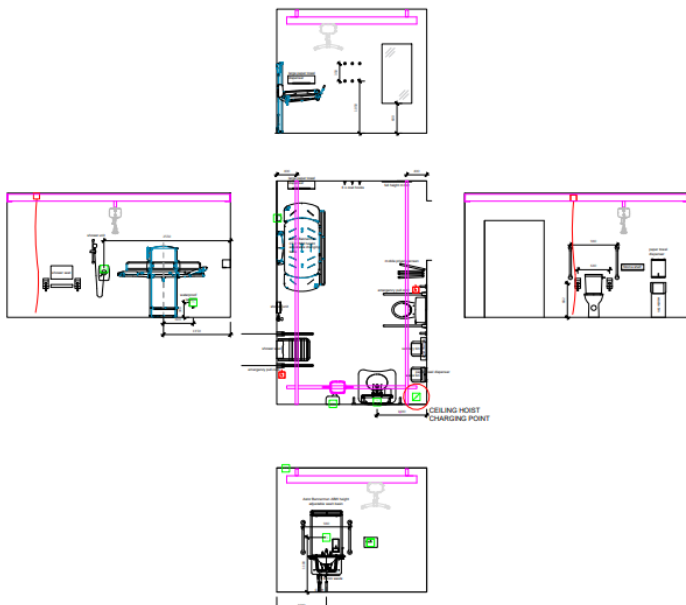
Main Equipment:

- Astor CTX2-CP Changing Table
- Astor OT200 Over Head Hoist
- Astor ABW-CP Height Adjustable Wash Basin
- Peninsular Toilet
- Shower
- Portable Privacy Screen
- Accessory Items

[Visit our website for the full range of equipment available](#)

TECHNICAL

Layout



The perfect Changing Table for showering ...

In facilities where a shower is needed, the Astor CTX2-CP is a perfect choice with its integrated water collection tray and drain hose to direct waste water directly to a

[Visit our website for CAD/BIM files, and product spec sheets](#)