

Changing Places

Product Range
and Specification
Requirements

www.astorbannerman.co.uk



Contents

Key Equipment

Overhead Hoists	Astor OT200	6
Changing Tables Height Adjustable Wall Mounted	Astor Invincible Changing Table	7
	Astor CTX2-CP Changing and Showering Table	8
	Astor CT Nivano Changing Table	8
Changing Tables Height Adjustable Mobile	Astor Mobile Changing Table	9
	Astor Shower Trolley	9
Wash Basins Height Adjustable Wall Mounted	Astor ABW-CP	10
	Astor Aquba	11
	Astor ABW6 / ABW6SP	11
WC	Geberit Aquaclean Mera Care	12
	Peninsular Toilet	12
Shower	Triton Omnicare Electric Shower	13
Privacy Screen	Wall Mounted Qwickscreen Air	14
	Wall Mounted Privacy Screen	14
	Mobile Privacy Screen	15

Accessory Items

Wall Mounted	Standard Doc M Grab Rail	16
	HEWI Support Rail	16
	Standard Doc M Hinged Support Rail	17
	HEWI Hinged Support Rail	17
	Stainless Steel Colostomy Bag Shelf	18
	White Colostomy Bag Shelf	18
	Coat Hooks	19
	Acrylic Mirror	19
	Stainless Steel Toilet Roll Dispenser	20
	White Toilet Paper Dispenser	20
	Stainless Steel Soap Dispenser	21
	White Soap Dispenser	21
	Stainless Steel Paper Towel Dispenser	22
	White Paper Towel Dispenser	22
	Wide Paper Towel Dispenser - Metal	23
	Wide Paper Towel Dispenser - Plastic	23
	Stainless Steel Hand Dryer	24
	White Hand Dryer	24
	Alarm Kit	25
Floor Standing	Stainless Steel Large Swing Bin	26
	White Large Swing Bin	26
	Stainless Steel Sanitary Bin	26
	White Sanitary Bin	26

About Astor Bannerman

As leading manufacturers of specialist care equipment, and co-sponsors of the Changing Places Campaign for 8 years, Astor Bannerman are the only UK manufacturer to produce the full range of capital equipment specified in a Changing Places Toilet (CPT). We are best placed to offer the technical insight, product innovation and design & planning expertise to successfully supply and install CPTs in the UK. Our CPT installations include over 100 for Tesco, many for the National Trust and within iconic buildings such as the Tower of London, Anfield Football Stadium and Windsor Castle as well as smaller venues such as The Manx Museum and Finsbury Park.

Why Astor Bannerman?



Over 27 Years' Experience:

We have been supporting people and families living with a disability for over 27 years; designing, manufacturing and installing equipment to improve lives.



Product Innovation:

Astor Invincible is the only Changing Table designed specifically for Changing Places and public spaces. Astor Bannerman are a forward thinking and innovative company, looking to develop and launch new products that are perfectly suited to the requirements.



Comprehensive After Care and Servicing:

Our support does not stop at installation. We will help you to get your CPT registered and offer a range of service packages to give you hassle free maintenance of your facility.



Full Product Range:

The only manufacturer of the full range of capital product specified in a Changing Places Toilet, we can offer great availability and flexibility for your project.



Free Design Advice and Project Management:

Our experienced project management team are on hand to support you throughout the project with planning, scheduling and installation.



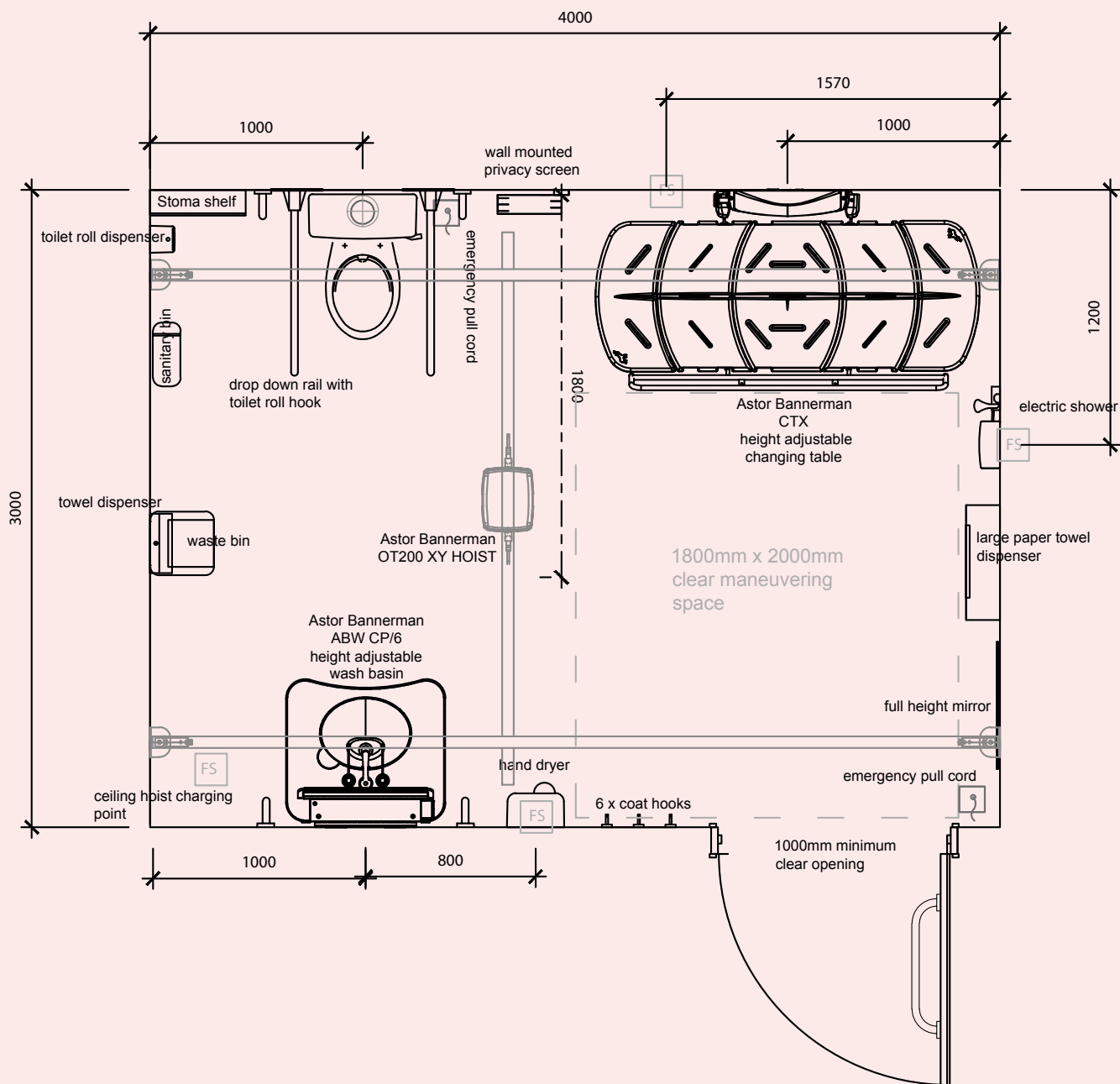
UK Manufacturer:

Astor Bannerman are a UK manufacturer, designing, manufacturing and installing within the UK and beyond.

Astor Bannerman are the leading designer, manufacturer and installer of Changing Places Toilets and are here to support you from idea conception to installation and registration of your facility and beyond.



Line Drawing Example Changing Places 4 m x 3 m Room Plan



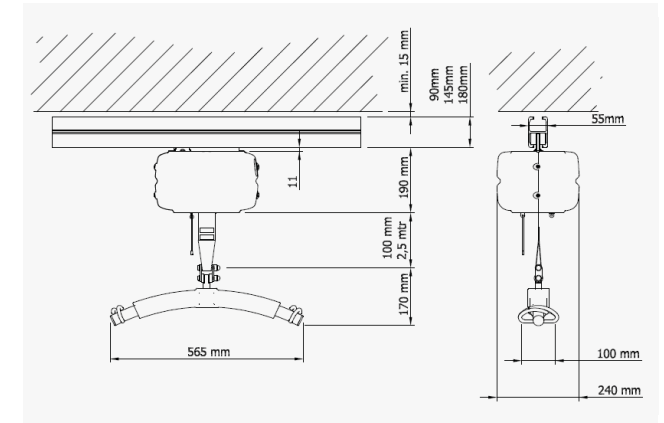
Overhead Hoists

Astor OT200 | 2 Function Hoist: 02.210.00.0204 | 4 Function Hoist: 02.210.00.0202

A compact overhead hoist with installation versatility to give full room coverage.

Specifications:

- Tape lifting range: 100 mm - 2500 mm (2400 mm)
- Cassette Dimensions: 303 mm x 240 mm x 190 mm
- 200 kg maximum working load
- Handset operation
- Auto emergency stop and lowering
- Quick fit rail system
- 2 Point, 4 hook spreader bar for loop slings
- Fitted to an H frame (XY) ceiling track for full room coverage



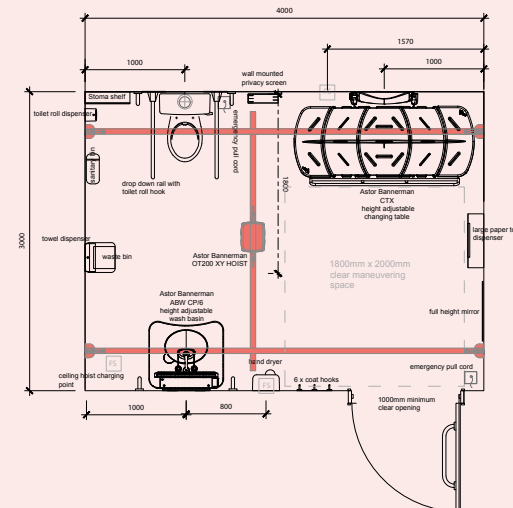
Overhead Hoist Room Plan

Changing Places Requirements:

- Ceiling track NOT mobile floor hoist
- XY system to give full room coverage
- Conform to BS EN ISO 10535
- 200 kg maximum working load
- Clear user instructions displayed
- Ceiling height at least 2.4 m
- Require LOLER testing / service
- Hoist expert consultation / specialist advice

Fixing Considerations:

- Reinforced walls or suitable structural ceilings
- Ensure no other ceiling fixtures (lights / alarms / sprinklers) obstruct ceiling track
- Ensure wall mounted equipment e.g. privacy screen does not interfere



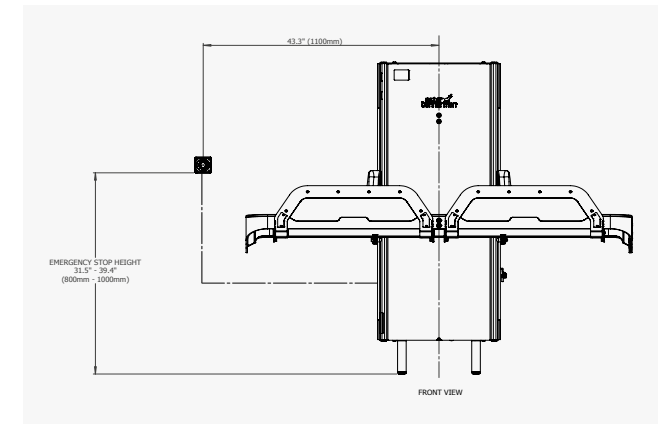
Changing Tables Height Adjustable Wall Mounted

Astor Invincible Changing Table | 00.154.00.0001

Robust changing table designed specifically for use in Changing Places Toilets and public spaces.

Specifications:

- Height adjustment: 300 mm - 1040 mm
- 227 kg maximum working load
- Cut resistant bed / stretcher / tamper proof
- IK10 (vandal / impact resistance) tested
- IPX4 – Protects from splashing water, no matter the direction
- Split front guard
- Stainless steel bed frame and components
- Emergency stop button
- Battery back up in case of power outage
- 1392 mm (H) x 1800 mm (L) x 956 mm (W)



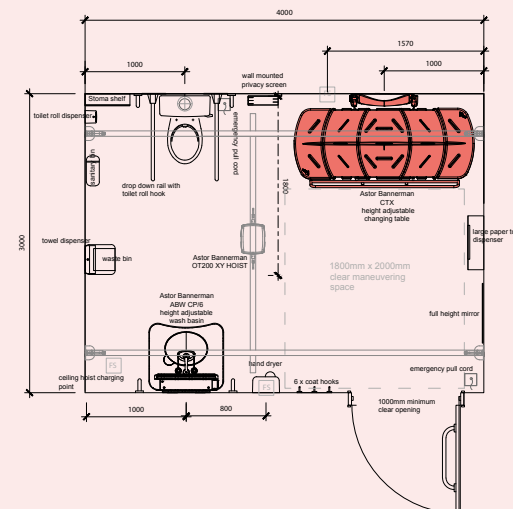
Changing Table Room Plan

Changing Places Requirements:

- At least 1800 mm (L) x 800 mm (W)
- Adjustable in height (300 mm to 1000 mm above floor level)
- Maximum working load of 200 kg (440 lbs)
- Integral shower tray and drain hose if shower included
- Safety rails

Fixing Considerations:

- Direct fix to masonry blocks or reinforce walls with 25 mm marine ply floor to ceiling
- Electrical and waste supplies are position critical: specify early



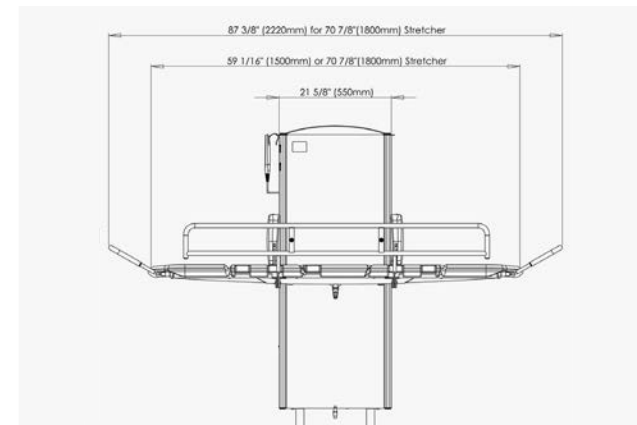
Changing Tables Height Adjustable Wall Mounted

Astor CTX2-CP Changing and Showering Table | 00.036.18.1828

Integrated water collection tray - ideal for rooms with shower.

Specifications:

- Height adjustment: 300 mm - 1040 mm
- 200 kg maximum working load
- Tilting head support
- Integrated water collection tray and waste hose
- Comfortable polyurethane padded mattress
- Stainless steel bed frame and components
- Fold away safety guard
- Integrated LED light
- Emergency stop button
- Battery back up in case of power outage
- Power status light
- 1549 mm (H) x 1800 mm (L) x 913 mm (W)

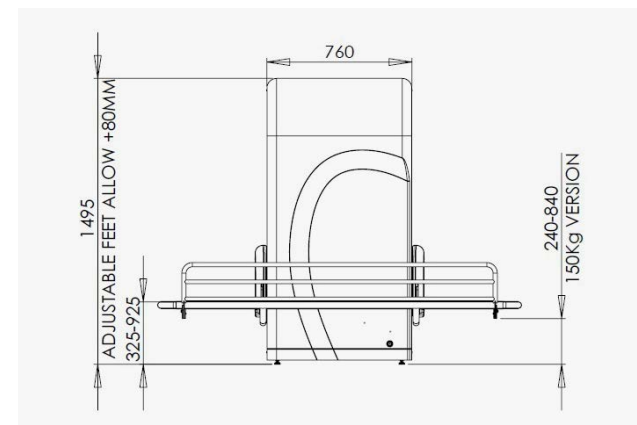


Astor CT Nivano Changing Table | 00.038.12.1800

Flexible vinyl stretcher with drain holes for versatile use.

Specifications:

- Height adjustment: 300 mm - 900 mm
- 220 kg maximum working load
- Durable non-rip high tension vinyl stretcher
- Stainless steel bed frame and components
- Battery back up in case of power outage
- Protrudes just 242 mm from wall when stowed
- 1495 mm (H) x 1800 mm (L) x 915 mm (W)



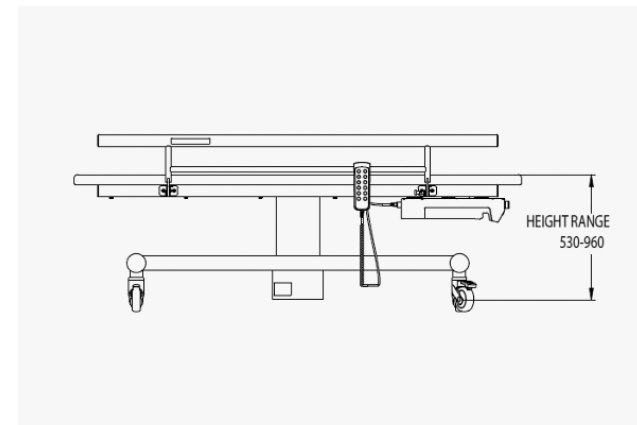
Changing Tables Height Adjustable Mobile

Astor Mobile Changing Table | 00.150.00.0004

Mobile to give flexibility and carer access on both sides.

Specifications:

- Height adjustment: 530 mm - 960 mm
- 200 kg maximum working load
- Padded top fully sealed if used with a shower
- Handset operation
- Secondary operating buttons in case of handset damage
- Rechargeable battery powered
- Lockable fold down side guards
- 4 lockable castors
- 1800 mm (L) x 800 mm (W), Trolley 910 mm (W)

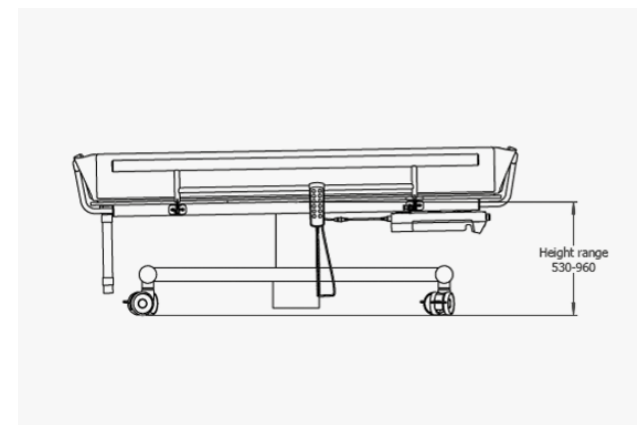


Astor Shower Trolley | 00.150.00.0005

Perfect for use in rooms with a shower giving extra flexibility and carer access.

Specifications:

- Height adjustment: 530 mm - 960 mm
- 200 kg maximum working load
- Handset operation
- Secondary operating buttons in case of handset damage
- Rechargeable battery powered
- Lockable fold down side guards
- Fixed head and foot rails
- 4 twin wheel lockable castors
- Waterproof shower mattress with raised sides
- Integral drain and waste hose with full size bath strainer
- 1800 mm (L) x 585 mm (W), Trolley 745 mm (W)



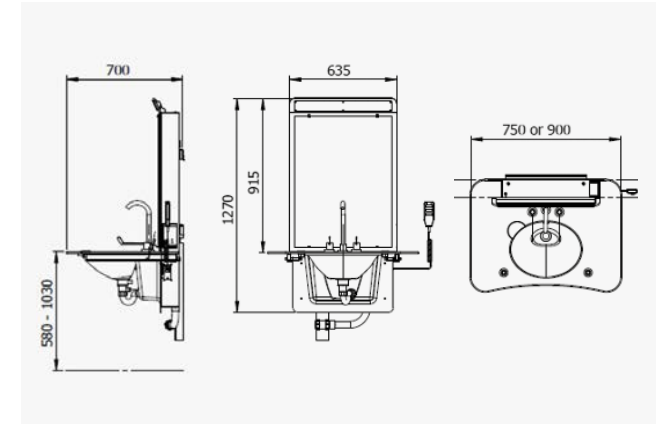
Wash Basins Height Adjustable Wall Mounted

Astor ABW-CP | 00.047.10.0001

Extra wide basin surround for added support, with integral mirror and soap dispenser.

Specifications:

- Height adjustment: 580 mm - 1030 mm
- Handset operation
- Mains operated – battery backup
- Anti-trap safety cut-out
- Corian style basin surround - 750 mm wide
- 150 mm single mixer lever tap
- Space under unit for wheelchair access
- Large mirror soap dispenser attached
- 1270 mm (H) x 750 mm (W) x 700 mm (D)



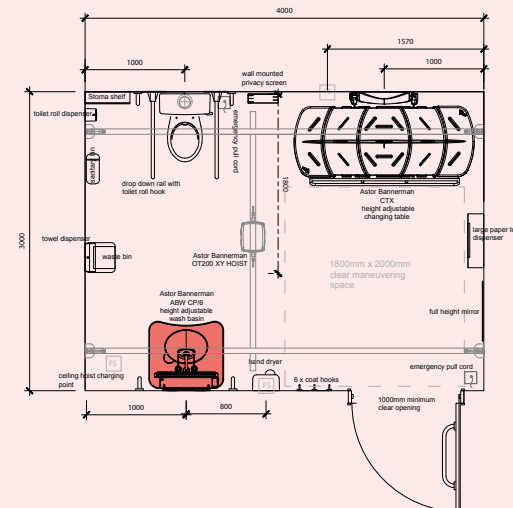
Wash Basins Room Plan

Changing Places Requirements:

- Height adjustable – power assisted
- Large bowl
- Level areas at the side for forearm support
- Clear knee space under bowl – no pedestal
- Pressure sensitive safety override

Fixing Considerations:

- Direct fix to masonry blocks or reinforce walls with 25 mm marine ply floor to ceiling
- Electrical, water and waste supplies are position critical: specify early



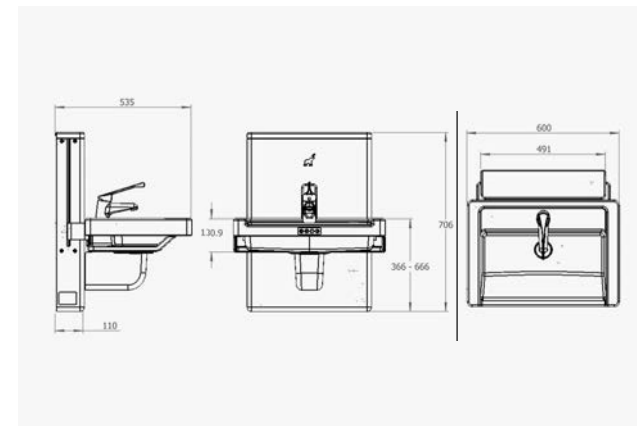
Wash Basins Height Adjustable Wall Mounted

Astor Aquba | 600mm Basin: 00.152.00.0001/2/3 1=Coral, 2=Silver, 3=Matte Black | **750mm Basin:** 00.152.00.010/20/30 | **900mm Basin:** 00.152.00.100/200/300

Smallest integrated height adjustable wash basin unit giving full wheelchair access.

Specifications:

- Height adjustment: 300 mm
- Corian style basin and cover finishes
- Integrated control panel
- 2 settable height positions
- Integrated load bearing rails in a choice of 3 colours - coral, silver and matte black
- Click-clack soft touch waste
- Lock-out functionality & anti-trap sensor
- Long lever mixer tap
- All required plumbing
- 706 mm (H) x 600/750/900 mm (W) x 535 mm (D)

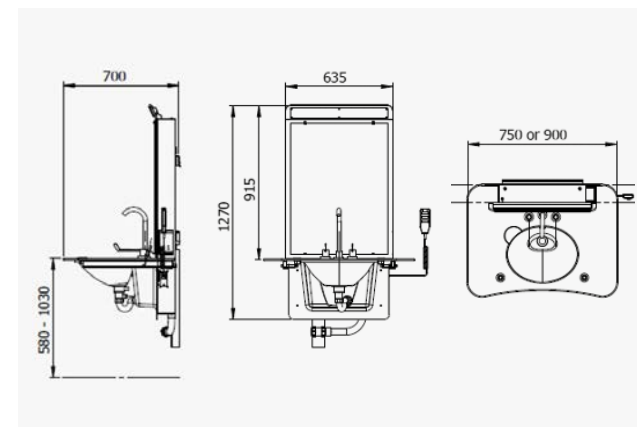


Astor ABW6 / ABW6SP | 00.040.10.0750

Developed with MDUK to address the needs of people living with muscle wasting conditions.

Specifications:

- Height adjustment: 580 mm - 1030 mm
- Handset operation
- Mains operated - battery backup
- Anti-trap safety cut-out
- Corian style basin surround - 750 mm wide
- 150 mm single mixer lever tap
- Space under unit for wheelchair access
- Large mirror soap dispenser attached
- Handset controlled pop up waste; timed taps; strip light (ABW6SP)
- 1270 mm (H) x 750 mm (W) x 700 mm (D)



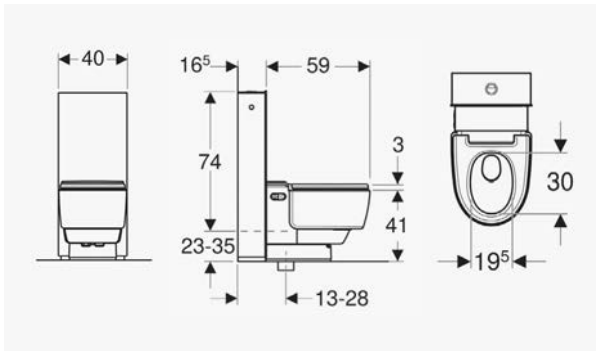
WC

Geberit AquaClean Mera Care | 02.099.01.0001

Shower Toilet.

Specifications:

- Adjustable height (425 mm - 560 mm) at installation
- Descaling function
- Continuous flow heater and storage water heater
- Customisable control options to suit needs:
automatic flushing; remote control; touchless wall panel
- Shower chair mode option
- Adjustable spray arm and temperature
- 190 kg maximum working load

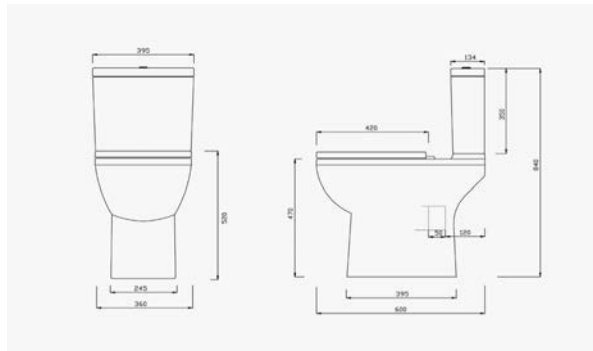


Peninsular Toilet | 00.300.20.0007

Doc M Toilet.

Specifications:

- Doc M compliant
- Includes 750 mm projection
- Close coupled pan and cistern assembly
- Blue colour contrasted seat – no front gap
- Stainless steel hinge
- Cistern fittings and lever



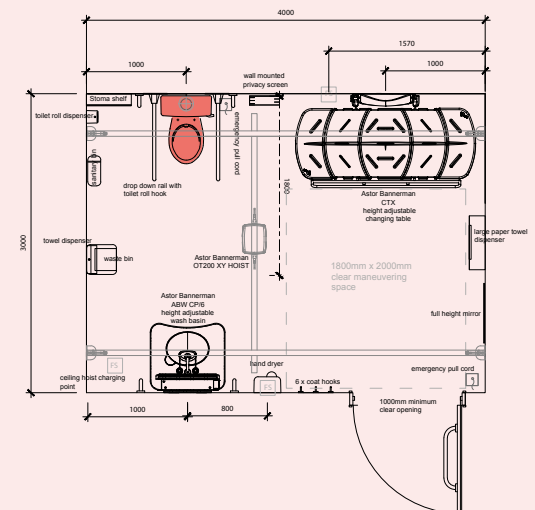
WC Room Plan

Changing Places Requirements:

- Secure fixings to support transfers
- No gap in front of seat
- Avoid seat covers
- Prefer close coupled systems
- Wash/dry toilets require maintenance plan
- Seat height of 480 mm
- Requires 1000 mm distance from any fixed object or wall to toilet centre line

Fixing Considerations:

- Direct fix to masonry blocks or reinforce walls with 25 mm marine ply floor to ceiling
- Electrical, water and waste supplies are position critical: specify early



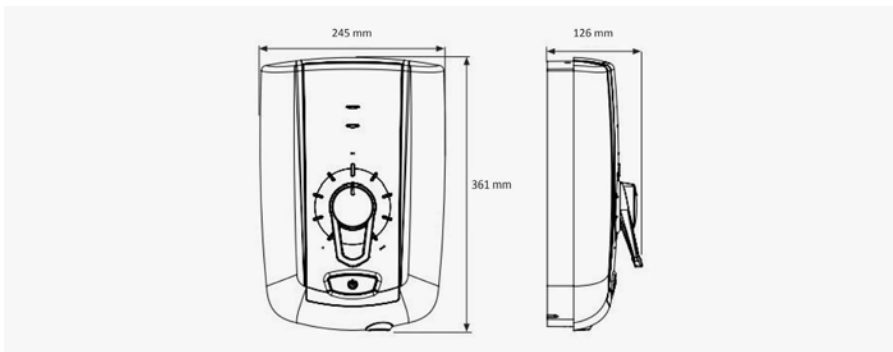
Shower

Triton Omnicare Electric Shower | 02.300.20.0069

Shower with accessibility features incorporated.

Specifications:

- Clear easy controls for visually impaired
- Temperature max automatic shutdown
- 5 spray patterns
- Adjustable shower head on riser rail
- Approved by RNIB & BEAB



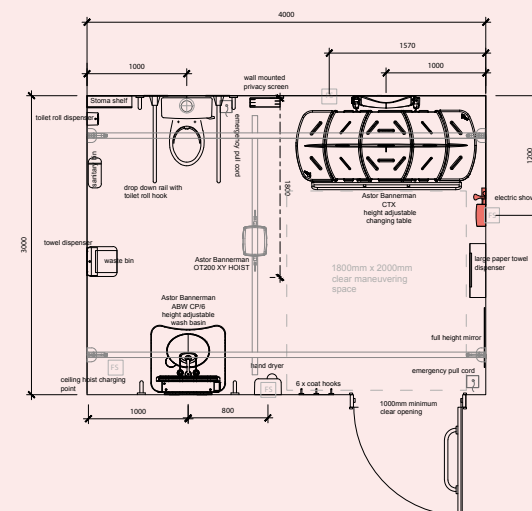
Shower Room Plan

Changing Places Requirements:

- Not required in all Changing Places Toilets
- Recommended in some settings e.g. leisure centres / travel hubs
- Controls easy to read and operate
- Hose length of 2000 mm for shower head
- Temp max 43 degrees C
- Water in pipework > 60 degrees C

Fixing Considerations:

- In a corner away from the door
- Incorporate a wet room floor / drain
- By a changing table / shower chair
- Step free access
- Sloped floor - gradient no greater than 1:50
- Fix shower head 1200 mm - 1400 mm above floor level
- Fix control unit 750 mm - 1000 mm above floor level



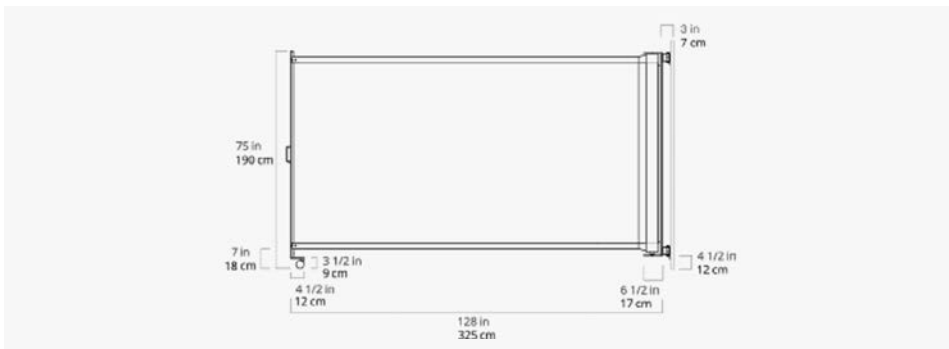
Privacy Screen

Wall Mounted Qwickscreen Air | 20.300.20.0029

Personalised privacy screen printed both sides with an image of your choice to add a talking point to the room!

Specifications:

- Bespoke image printed both sides
- Engineered with a single touch point.
- Easy to clean with standard medical cleaning products.
- Designed alongside microbiologists for ultimate infection control
- No track or rails for entanglement
- Ideal for public and hygienic spaces
- Water resistant and corrosion free

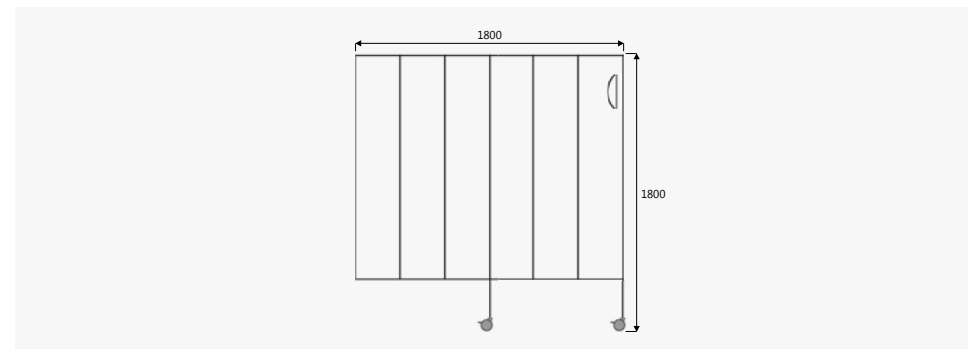


Wall Mounted Privacy Screen | 20.300.00.0036

Panelled concertina screen for discreet storage.

Specifications:

- Easy fold panels for compact storage
- No track or rails for entanglement
- Durable / ideal for public and hygienic spaces
- Easy to clean panels, handle and hinges
- Water resistant and corrosion free
- 1.5 mm Formica laminate panel skin
- 1800 mm (H) x 1800 mm (W) x 28 mm (D)



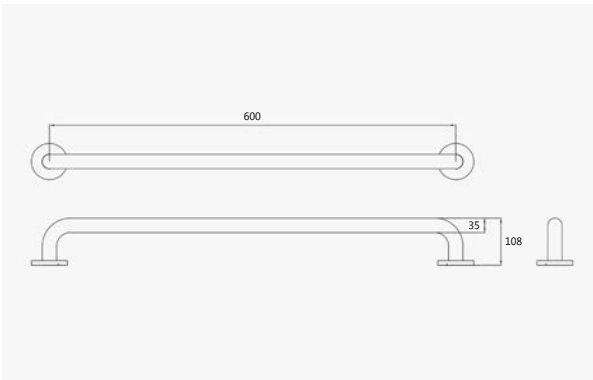
Accessory Items Wall Mounted Support Rails

Standard Doc M Grab Rail

20.300.20.0009

Specifications:

- Non corrosive aluminium construction – blue finish
- 190 kg max user weight
- 600 mm (L) x 108 mm (W) x 35 mm (D)



HEWI Support Rail

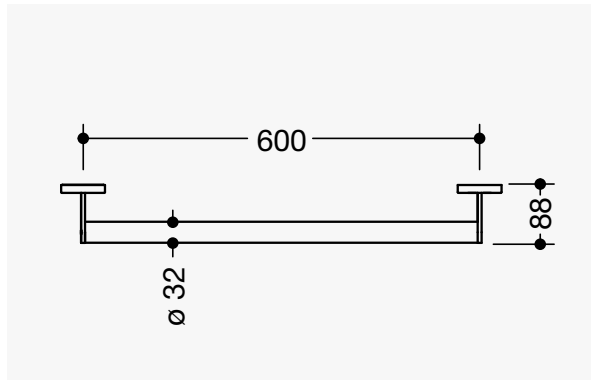
Matte Black: 02.300.20.0058

Stainless Steel: 02.300.20.0059

Dark Grey: 02.300.20.0065

Specifications:

- Made of stainless steel, satin
- Straight rail with supports straight to the wall and roses
- Fixing spacing 600 mm, 88 mm deep, rail diameter 32 mm, tube thickness 2 mm, rose diameter 70 mm



Accessories Room Plan

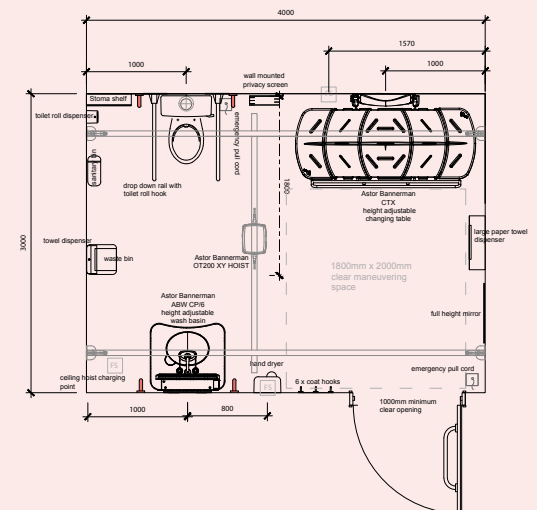
Changing Places Requirements:

Support/Grab Rails

- Vertical rails both side of the toilet
- Drop down rails both side of the toilet
- Tubular cross section 32 mm – 35 mm (D)
- Min 60 mm long
- Clearance of 50 – 60 mm between wall and rail
- Visually contrasting to surface mounted on
- Material that is easy to grip
- Ideally height adjustable, but min 680 mm above floor
- Positioned 320 mm either side of central line of WC
- Project 50 – 100 mm beyond front of WC when down

Fixing Considerations:

- Direct fix to masonry blocks or reinforce walls with 25 mm marine ply floor to ceiling
- Securely fixed to support body weight

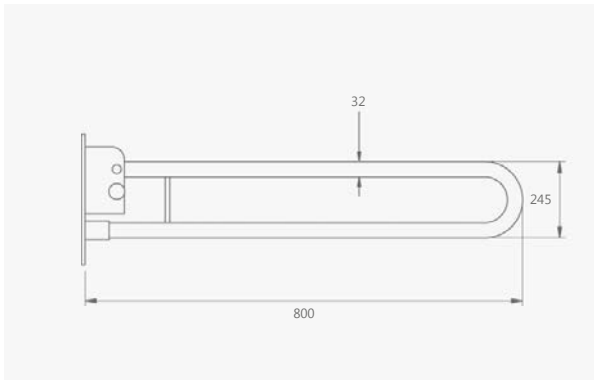


Accessory Items Wall Mounted Hinged Support Rails

Standard Doc M Hinged Support Rail 20.300.20.0031

Specifications:

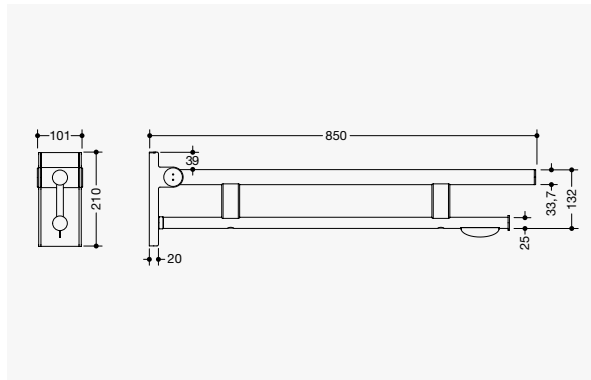
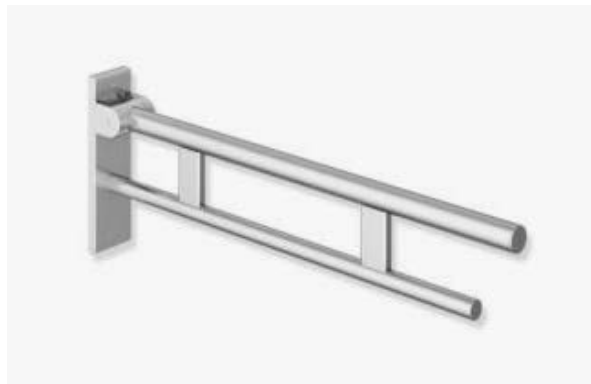
- Non corrosive aluminium construction – blue finish
- No lateral movement in hinge mechanism
- 160 kg max user weight
- 800 mm (L) x 245 mm (W) x 32 mm (D)



HEWI Hinged Support Rail Matte Black: 02.300.20.0062 Stainless Steel: 02.300.20.0061 Dark Grey: 02.300.20.0067

Specifications:

- Projection 850 mm, 256 mm high and 75 mm wide, top rail diameter 33.7 mm, bottom rail diameter 25 mm
- Weight capacity up to 100 kg



Accessories Room Plan

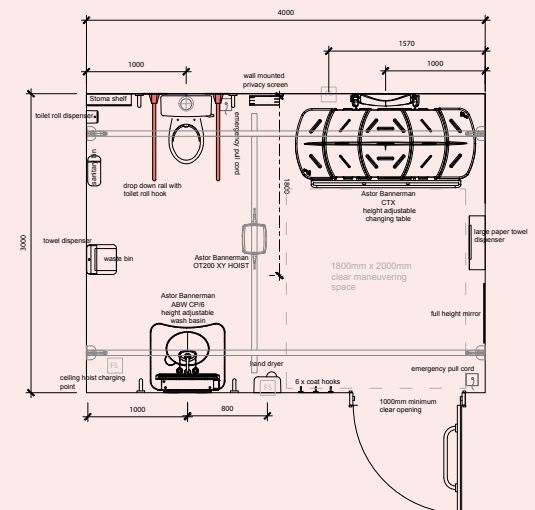
Changing Places Requirements:

Hinged Support Rails

- Vertical rails both side of the toilet
- Drop down rails both side of the toilet
- Tubular cross section 32 mm – 35 mm (D)
- Min 60 mm long
- Clearance of 50 – 60 mm between wall and rail
- Visually contrasting to surface mounted on
- Material that is easy to grip
- Ideally height adjustable, but min 680 mm above floor
- Positioned 320 mm either side of central line of WC
- Project 50 – 100 mm beyond front of WC when down

Fixing Considerations:

- Direct fix to masonry blocks or reinforce walls with 25 mm marine ply floor to ceiling
- Securely fixed to support body weight



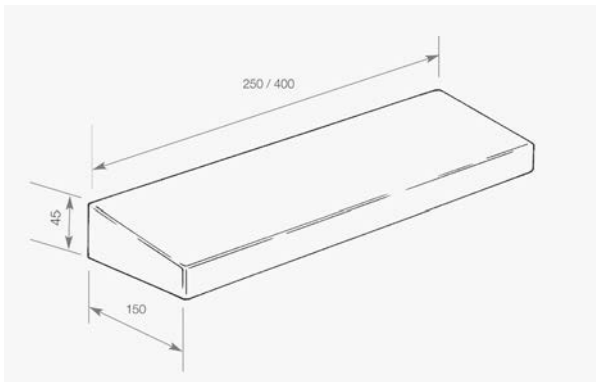
Accessory Items Wall Mounted Shelves

Stainless Steel Colostomy Bag Shelf

02.300.20.0002

Specifications:

- Stainless steel
- Prestige quality
- 400 mm (L) x 150 mm (W) x 45 mm (D)

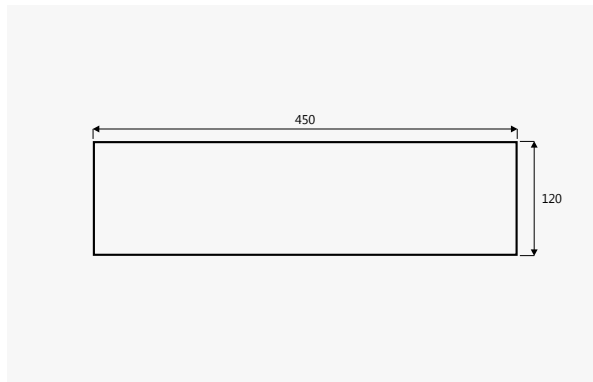


White Colostomy Bag Shelf

02.300.20.0002

Specifications:

- White epoxy coated
- Bacteriostatic 304 stainless steel
- 450 mm (L) x 120 mm (W)



Accessories Room Plan

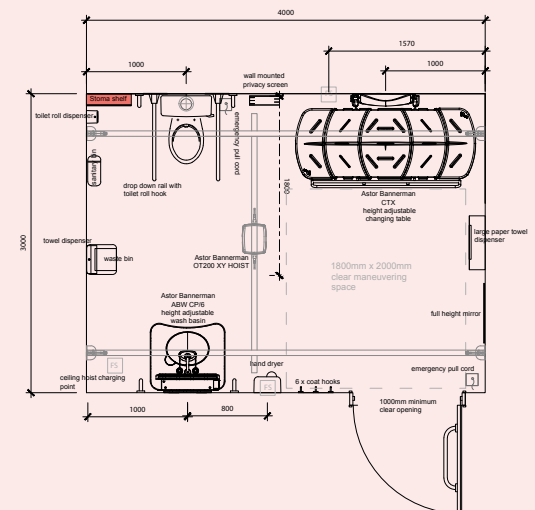
Changing Places Requirements:

Colostomy Bag Shelf

- 100 mm to 150 mm deep x min 400 mm wide
- Fitted 950 mm above floor level
- Must not obstruct wall-mounted handrails / other equipment
- Within reach for the user

Fixing Considerations:

- Direct fix to masonry blocks or reinforce walls with 25 mm marine ply floor to ceiling

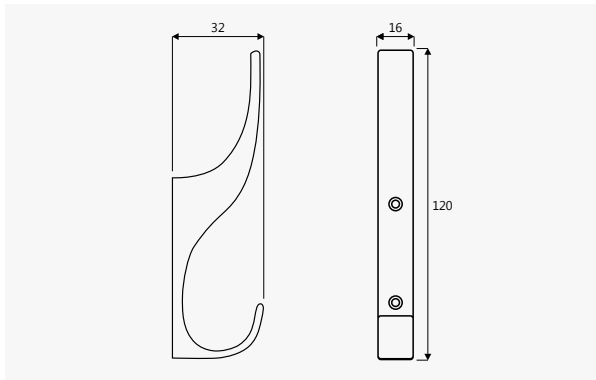


Accessory Items Wall Mounted Coat Hooks

Coat Hooks 20.300.20.0008

Specifications:

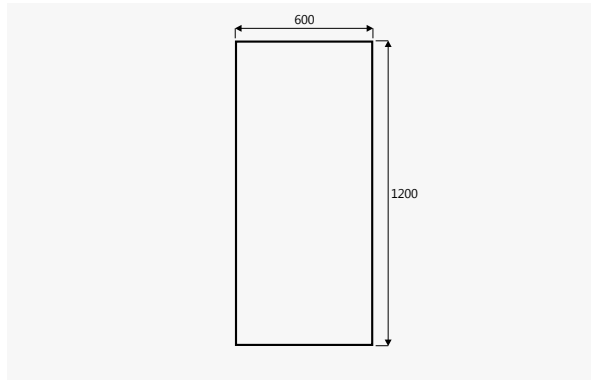
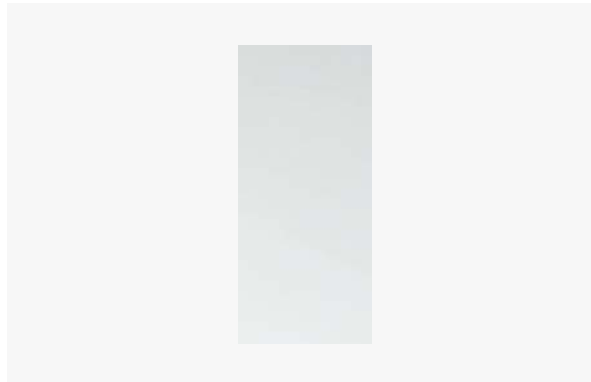
- Navy
- Unbreakable life guarantee
- Flat curve profile to avoid injury
- 6 required per Changing Place Toilet
- 120 mm (H) x 16 mm (W) x 32 mm (D)



Acrylic Mirror 02.300.20.0022

Specifications:

- Acrylic
- Fixing kit including anti tamper screws
- 1200 mm (H) x 600 mm (W) x 3 mm (D)



Accessories Room Plan

Changing Places Requirements:

Coat Hooks

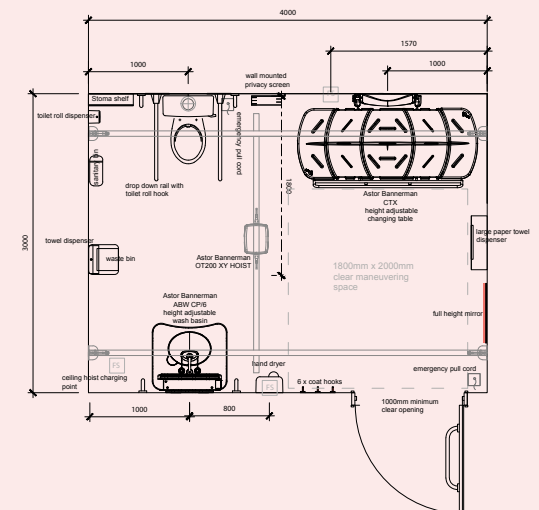
- 6x to allow CP user and two assistants to hang their coats and bags
- Positioned at two different heights: 1050 mm and 1400 mm above floor level

Mirror

- Wall mounted with the lower edge no higher than 600 mm above the floor
- Mirrors should not extend to floor level
- 600 mm wide x at least 1000 mm tall

Fixing Considerations:

- Direct fix to masonry blocks or reinforce walls with 25 mm marine ply floor to ceiling

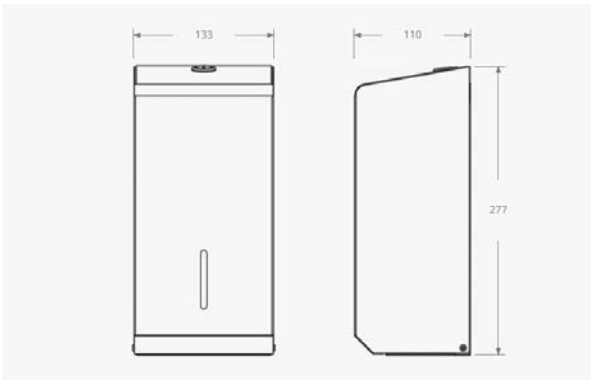


Accessory Items Wall Mounted Dispensers

Stainless Steel Toilet Paper Dispenser 20.300.20.0030

Specifications:

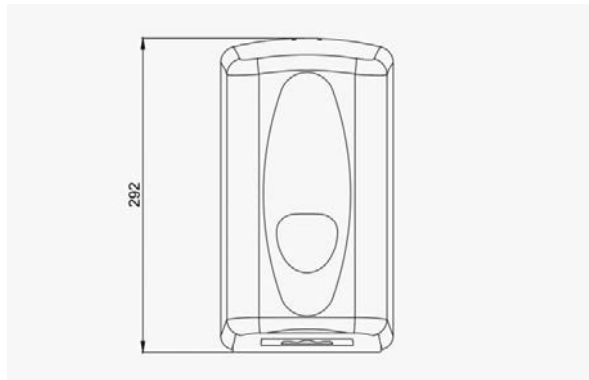
- Brushed stainless steel
- 304 L grade stainless steel / 240 g
- Capacity: approximately 3 Packs
- Weight: 1.3 kg
- 277 mm (H) x 133 mm (W) x 110 mm (D)



White Toilet Paper Dispenser 20.300.20.0010

Specifications:

- Durable material
- Lockable dispenser
- Max tissue size 120 mm x 100 mm
- 292 mm (H) x 160 mm (W) x 149 mm (D)



Accessories Room Plan

Changing Places Requirements:

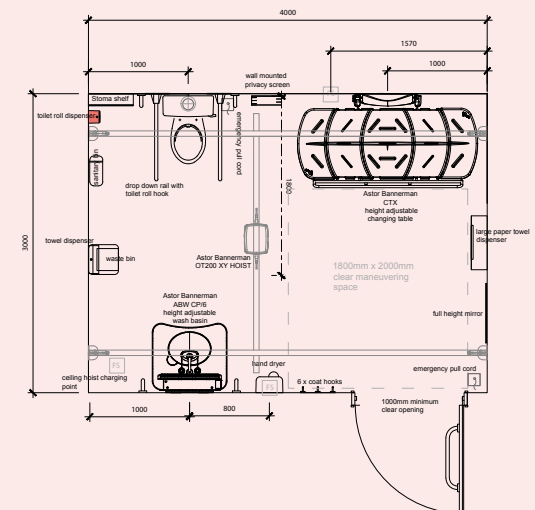
- Should contrast in colour with the wall
- Avoid shiny surfaces

Toilet Paper Dispensers

- Positioned where it can be reached easily by an assistant and/or by a person seated on the WC

Fixing Considerations:

- Direct fix to masonry blocks or reinforce walls with 25 mm marine ply floor to ceiling



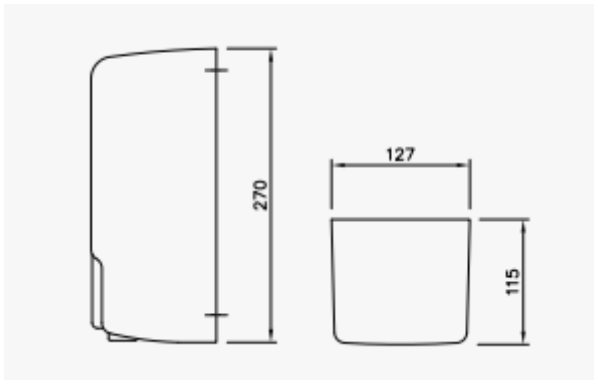
Accessory Items Wall Mounted Dispensers

Stainless Steel Soap Dispenser

02.300.20.0006

Specifications:

- One-shot dispenser
- Lockable
- High quality stainless steel
- 800 ml capacity
- 270 mm (H) x 127 mm (W) x 115 mm (D)

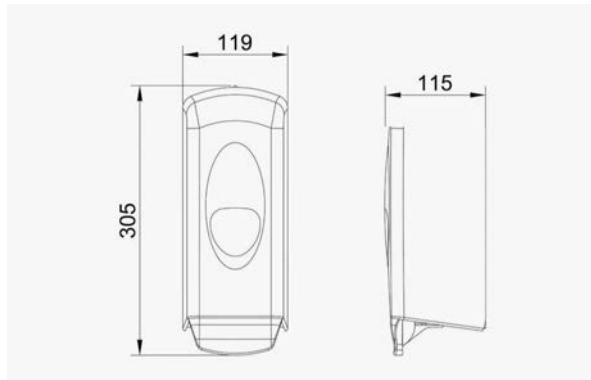


White Soap Dispenser

20.300.20.0032

Specifications:

- 1 ml lotion pump – 1000 dispensers per 1000 ml refill
- Keyed dispenser
- High impact ABS material
- Bulk fill 1 litre capacity
- 305 mm (H) x 119 mm (W) x 115 mm (D)



Accessories Room Plan

Changing Places Requirements:

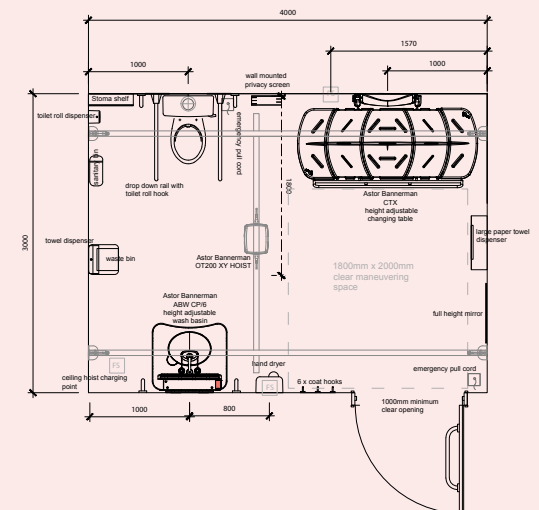
- Should contrast in colour with the wall
- Avoid shiny surfaces

Soap Dispensers

- Wall mounted directly above the washbasin
- Be within reach of a person seated in a wheelchair
- Underside positioned 800-1000 mm above floor level
- Allow room for it to be operated when the washbasin is at its highest position
- Easy to operate with one hand

Fixing Considerations:

- Direct fix to masonry blocks or reinforce walls with 25 mm marine ply floor to ceiling



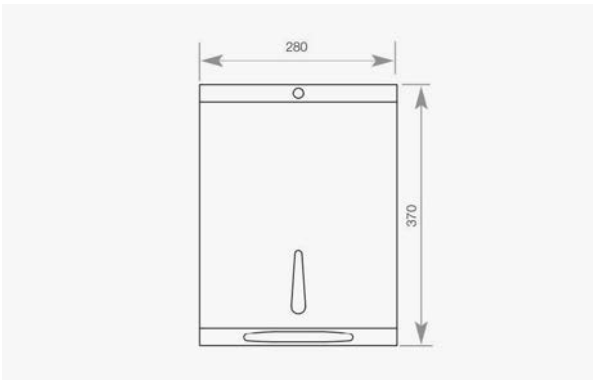
Accessory Items Wall Mounted Dispensers

Stainless Steel Paper Towel Dispenser

02.300.20.0003

Specifications:

- Lockable dispenser
- Brushed stainless steel
- Capacity 450 towels
- 370 mm (H) x 280 mm (W) x 103 mm (D)

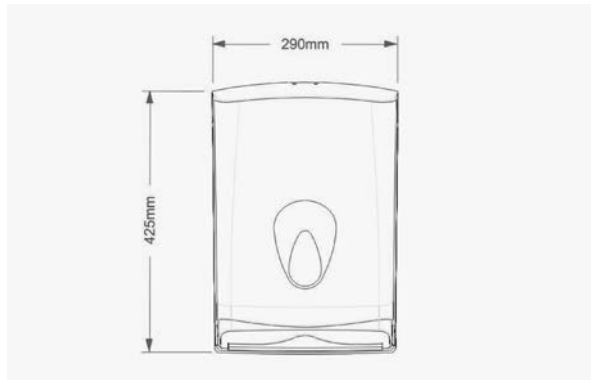


White Paper Towel Dispenser

02.300.20.0035

Specifications:

- ABS plastic body
- Suitable for C-fold or Z-fold towels
- Weight: 1 kg
- 425 mm (H) x 290 mm (W) x 145 mm (D)



Accessories Room Plan

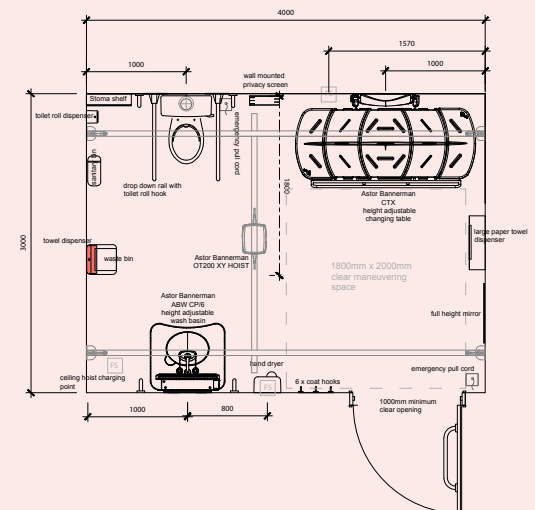
Changing Places Requirements:

Paper Towel Dispensers

- Wall mounted close to the washbasin
- Lower edge positioned 800 mm to 1000 mm above floor level

Fixing Considerations:

- Direct fix to masonry blocks or reinforce walls with 25 mm marine ply floor to ceiling

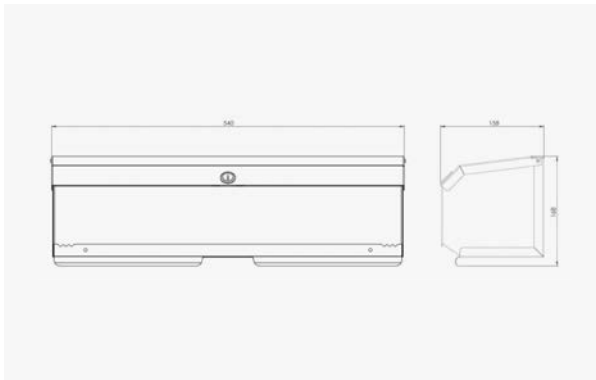


Accessory Items Wall Mounted Dispensers

Wide Paper Towel Dispenser - Metal 02.300.20.0010

Specifications:

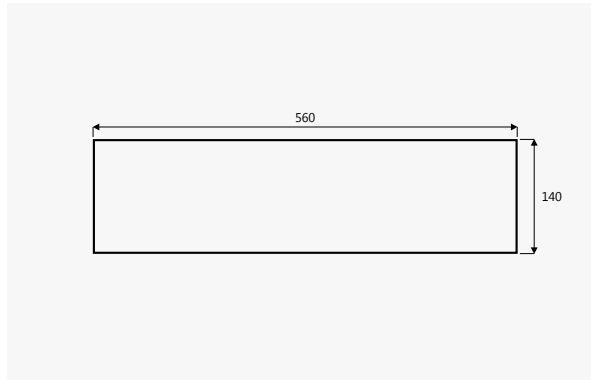
- Dispenses 20" couch rolls
- For use with Changing Tables
- White powder coat epoxy finish
- Key lockable
- 168 mm (H) x 540 mm (W) x 158 mm (D)



Wide Paper Towel Dispenser - Plastic 02.300.20.0006

Specifications:

- Dispenses 20" couch rolls
- For use with Changing Tables
- White ABS plastic
- 140 mm (H) x 560 mm (W) x 150 mm (D)



Accessories Room Plan

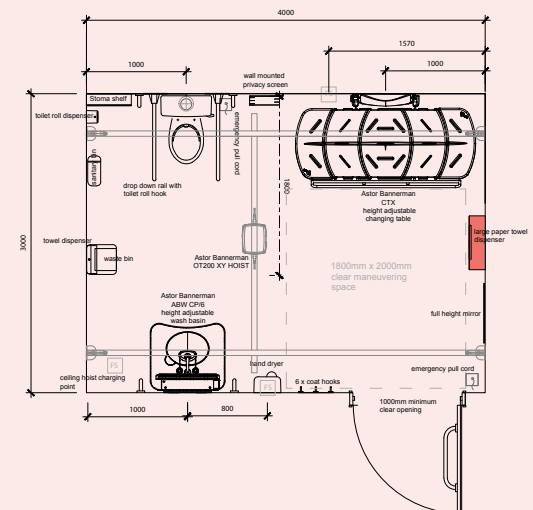
Changing Places Requirements:

Wide Paper Towel Dispensers

- Wall mounted adjacent to the head of the changing table
- Not too close to the shower

Fixing Considerations:

- Direct fix to masonry blocks or reinforce walls with 25 mm marine ply floor to ceiling

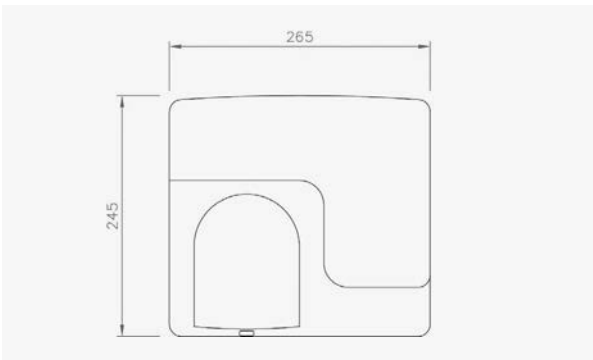


Accessory Items Wall Mounted Accessories

Stainless Steel Hand Dryer | 02.300.20.0001

Specifications:

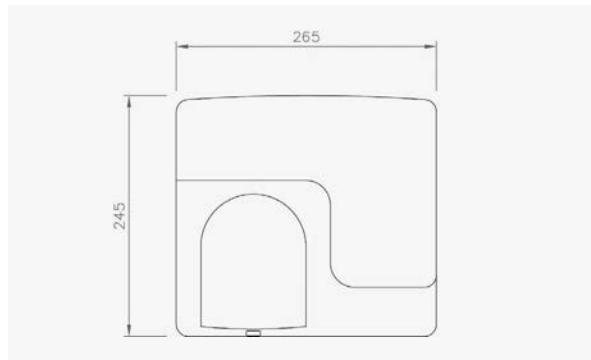
- 15-20 seconds dry time
- Motor 7500 RPM
- 2500 W / 240 V / 50 Hz / 10.4 A
- Sensor range: 0 ~ 110 mm
- Waterproof rating: IPX1
- Sound Level: 70 db+/- 5
- EU noise compliant
- Fan type: centrifugal
- 360 degree nozzle



White Hand Dryer | 02.300.20.0044

Specifications:

- 15-20 seconds dry time
- Motor 7500 RPM
- 2500 W / 240 V / 50 Hz / 10.4 A
- Sensor range: 0 ~ 110 mm
- Waterproof rating: IPX1
- Sound Level: 70 db+/- 5
- EU noise compliant
- Fan type: centrifugal
- 360 degree nozzle



Accessories Room Plan

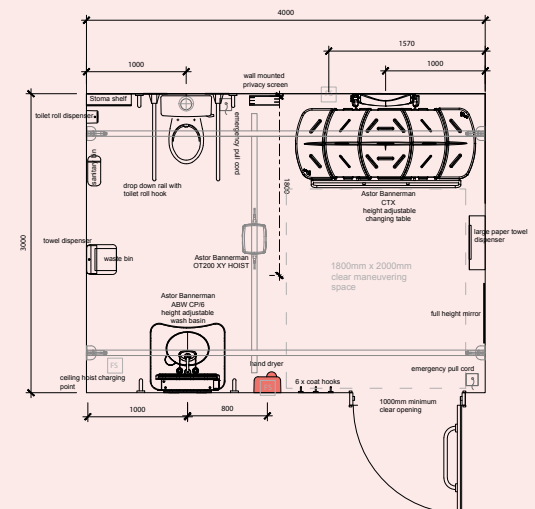
Changing Places Requirements:

Hand Dryers

- Avoid hand dryers that require putting hands into a limited space at the top
- Avoid loud 'ultrarapid' hand dryers that can be too loud
- Should contrast in colour with the wall
- Avoid shiny surfaces

Fixing Considerations:

- Direct fix to masonry blocks or reinforce walls with 25 mm marine ply floor to ceiling
- Position door side of the washbasin, 800 mm to 1000 mm above floor level



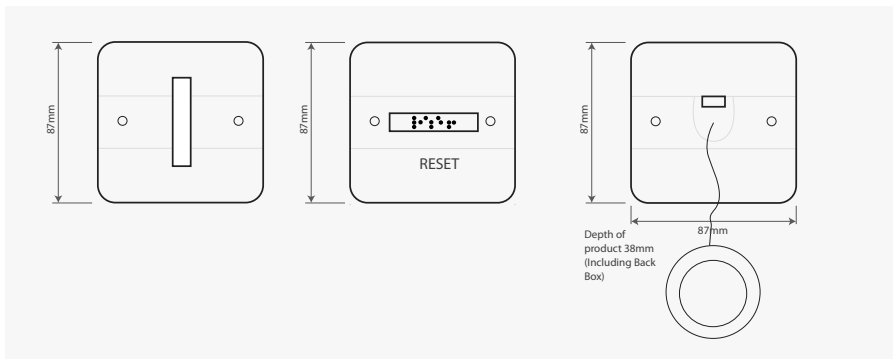
Accessory Items Wall Mounted Accessories

Alarm Kit White: 00.300.20.0003

Alarm Kit Stainless Steel: 00.300.20.0004

Specifications:

- Sounder within the reset unit to give audible reassurance that assistance is on the way
- Braille text on the reset unit
- Twin pull chord rings
- Available in white or stainless steel



Accessories Room Plan

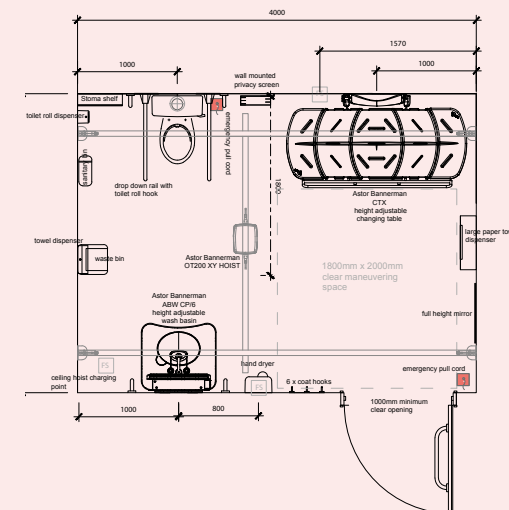
Changing Places Requirements:

Alarm Kit

- Include two alarm pull cords and a reset button:
 - one alarm pull cord adjacent to the toilet
 - one pull cord positioned near to the door
- Alarm pull cords should be coloured red
- Must extend down to within 100 mm of the floor
- Include a reset control button / switch
- A light and sound indicator to show alarm has been raised positioned above the door on the outside of the room

Fixing Considerations:

- Direct fix to masonry blocks or reinforce walls with 25 mm marine ply floor to ceiling



Accessory Items Floor Standing Accessories

Stainless Steel Large Swing Bin 02.300.20.0012

Specifications:

- High quality stainless steel
- Detachable lid for easy access
- Spring loaded push flap
- 30 litre capacity
- 650 mm (H) x 355 mm (W) x 159 mm (D)



White Large Swing Bin 02.300.20.0034

Specifications:

- Detachable lid
- Polypropylene
- 50 litre capacity
- 645 mm (H) x 360 mm (W) x 290 mm (D)



Stainless Steel Sanitary Bin 02.300.20.0009

Specifications:

- Surface satin finished
- Material thickness 0.8 mm
- Supplied with integrated bag holder
- Self closing lid with integrated storage for paper hygiene bags
- Approximately 6 litre capacity
- 469 mm (H) x 350 mm (W) x 130 mm (D)



White Sanitary Bin 02.300.20.0036

Specifications:

- Robust ABS
- Foot pedal
- 20 litre capacity
- 570 mm (H) x 170 mm (W) x 390 mm (D)



Location and Signage Considerations

- Location of the Changing Places Toilet within the venue to optimise accessibility and visibility
- Inclusion of equipment signage giving clear usage instructions and safety information (provided as standard by Astor Bannerman)
- Clear external wall and door signage (options available)
- Incorporation of Changing Places Toilet information into existing signage



Ambiance Considerations

- Personalise to create an attractive room
 - Add wall murals / printed privacy screens
 - Use of wall colour and attractive fixtures
- Ambient lighting
 - Provide an even level of illumination
 - 300 lux at the height of the changing table
 - Avoid creating shadows, glare or reflections
- Colour contrast to aid people with visual or perception impairments
- 30 degrees of LRV between critical surfaces
 - Wall to floor
 - Wall to door
 - All accessories particularly hand rails and toilet seats
 - Signage
- Avoid noisy appliances such as hand-dryers
- Ensure room is warm and welcoming





Astor Bannerman
The Elephant Works
Andoversford Link
Cheltenham GL54 4LB

+44 1242 820820
info@astorbannerman.co.uk
www.astorbannerman.co.uk



Website



Bim Library

