



Making museums more accessible



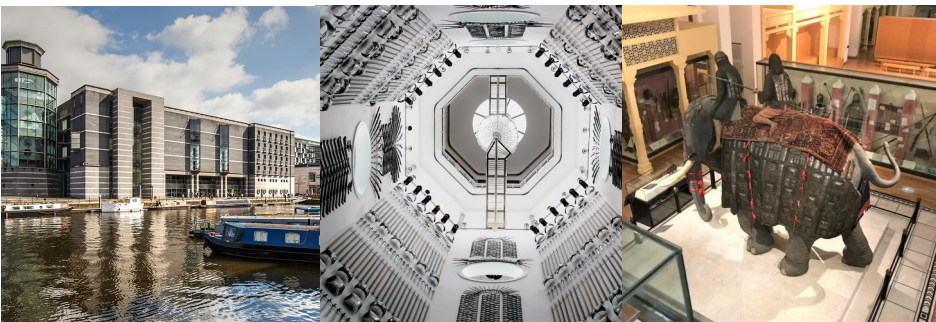
Installation of a Changing Places Toilet at the Royal Armouries Museum, Leeds

BACKGROUND

The Royal Armouries Museum is the modern home of the United Kingdom's national collection of arms and armour. It houses one of the largest collections of arms and armour in the world, with more than 4,500 objects from the ancient world to the modern day. The decision was made to install a Changing Places Toilet to improve accessibility for visitors with more complex needs.

Key Considerations

- Needed to be easily accessible within the museum
- Needed to accommodate those with complex needs
- Turnkey solution required
- Branding to reinforce museum's identity



Want more information about Changing Places Toilets?

[Visit our website to find out more](#)

SOLUTION

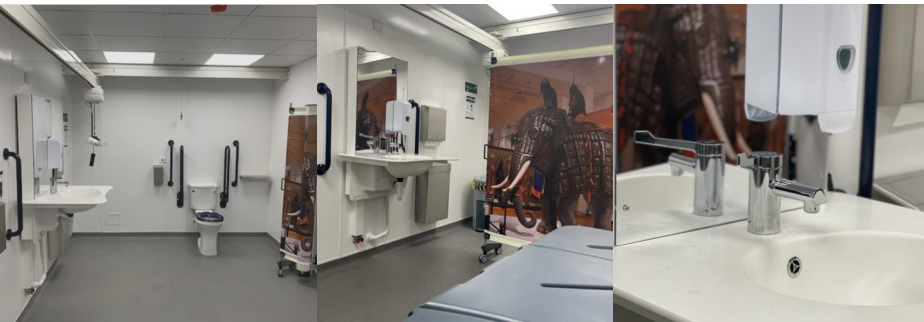
We combined two rooms on the ground floor of the museum, undertook all construction work and prepped the room for installation of the equipment, which we also supplied and installed.

"I firmly believe that we should be opening up the museum to a wider audience and that people with enhanced disabilities shouldn't be restricted to where they can and can't visit due to a lack of facilities. This was reflected during the opening day seeing the smiles and joy of the kids who would otherwise have been unable to visit the museum."

Phil Sugden, Head of Estates and Facilities

Main Equipment:

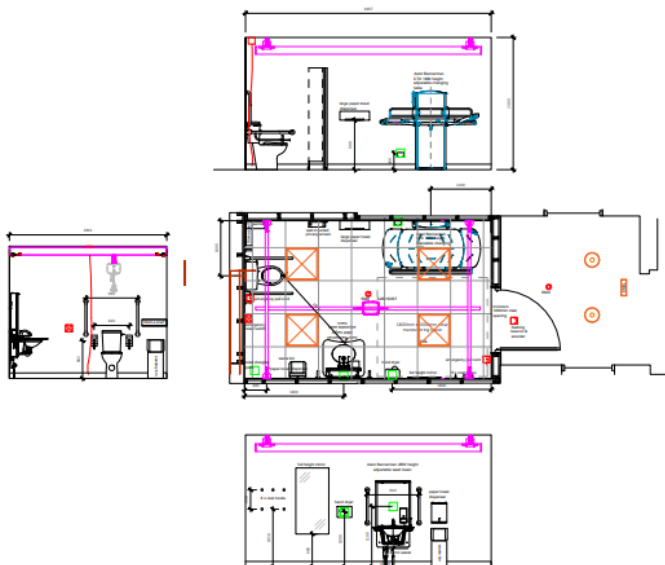
- Astor CTX2-CP Changing Table
- Astor OT200 Over Head Hoist
- Astor ABW-CP Height Adjustable Wash Basin
- Peninsular Toilet
- Wall Mounted Personalised Privacy Screen
- Accessory Items



[Visit our website for the full range of equipment available](#)

TECHNICAL

Layout



Personalised Privacy Screen with bespoke imagery

We are able to supply a wall-mounted privacy screen incorporating a design or imagery of your choice. This offers an easy way of personalising a Changing Places Toilet.

[Visit our website for CAD/BIM files, and product spec sheets](#)