

Modular Changing Places Toilet



Over 250,000 people in the UK need a Changing Places facility in order to access a toilet. If there's not enough room within your venue to install a Changing Places Toilet, a modular building can provide a quick and easy solution without the expense and hassle of building works.

"A perfect solution if you do not have the space to convert an existing room."

83%

of people with a disability
avoid inaccessible buildings

1 in 5

people have a disability

£12.1 Billion

spent per year on tourism
by people with health conditions

Equipment Included:

- ✓ Full room covering Astor OT200 Ceiling Hoist
- ✓ Height adjustable Astor Invincible or Astor CTX2-CP Changing Table
- ✓ Height adjustable Astor ABW-CP Wash Basin
- ✓ Peninsular Toilet
- ✓ Privacy Screen
- ✓ Ancillary Items



Contact us
for more details

info@astorbannerman.co.uk

01242 820820

"All the benefits of adding a Changing Places Toilet without the hassle of internal building works."

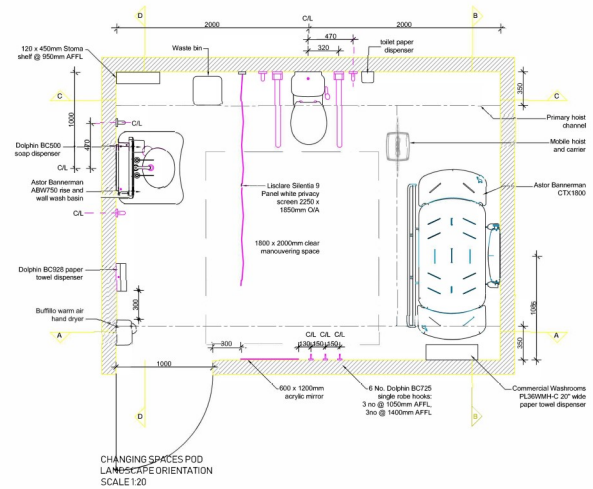
Modular Changing Places Toilet



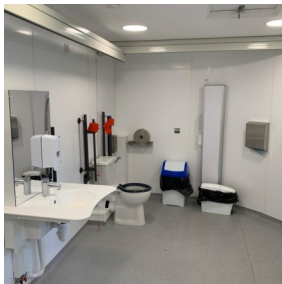
Specification:

A Modular Changing Places Toilet comes ready fitted with all specified equipment, designed for use in a public usage facility. It includes a full room covering Astor OT200 Ceiling Hoist, a wall mounted Astor Invincible or CTX2-CP Changing Table, an Astor ABW-CP Height Adjustable Basin, a pedestal Toilet and all specified ancillary items.

The modular solution can be tailored to suit your environment and budget, but all conform with the 12 square metres specification requirement. They are compliant to BS8300-2-2018 standards, and all equipment installed is specification compliant and has passed through rigorous testing.



"With a wide range of interiors, cladding and roofing options, it is possible to install a modular building for relatively modest cost."



Equipment fitted:

It comes complete, ready fitted with all the equipment required to meet Changing Places and BS8300-2:2018 standards, with a compliant layout and design, removing all the hassle from your planning and installation.



Hassle free Installation:

They are quick and easy to install, with none of the mess and inconvenience involved with weeks of building works.

Premium products designed for public Changing Places:

Including robust, hygienic Astor Invincible Changing Table and Astor ABW-CP - height adjustable basin, mirror and soap dispenser.



Rigorously tested:

Installed equipment has been rigorously tested for complete peace of mind.

Visible - Higher Usage:

In contrast to many internal adaptations, our standalone facilities are highly visible. As a result, they get used more and help to attract new customers.

Experienced Team:

Our partner company is an expert in the provision of public toilets and have designed and installed new amenity buildings for over 150 Local Authorities, tourism departments, environmental groups and transport hubs.

Design Options:

Our Modular Changing Places Toilets can be designed to fit with your environment, with a range of cladding and roofing options to suit budget and design preferences.

Turnkey Solution:

Full turnkey solution from design to installation.