

# Making the countryside more accessible



## Installation of a Changing Places Toilet at Seven Sisters Country Park

### BACKGROUND

In July 2021 the South Downs National Park Authority became owners of Seven Sisters Country Park. One of their main focuses was creating better experiences for visitors. As part of that process the visitor centre was recently redeveloped, ensuring it was more accessible, with same level access and new toilets. To improve accessibility yet further, the team decided to install a Changing Places Toilet.

### Key Considerations

- Shower needed for those visiting the beach and other outside spaces
- Easy access required
- Needed to accommodate those with complex needs



Want more information about Changing Places Toilets?

[Visit our website to find out more](#)

## SOLUTION

We supplied a height-adjustable changing table suitable for use with a shower, and a height-adjustable washbasin with integral mirror and soap dispenser, specifically designed for use in public Changing Places Toilets.

The Changing Places Toilet was adapted from an existing space and is easily accessible from the main visitor centre.

*"It is wonderful to see the team at Seven Sisters Country Park embracing accessibility by improving the facilities on site for those with additional needs. The new changing places toilet in addition to other improvements to the visitor centre and the provision of an easy access trail has made the site much more welcoming to disabled visitors"* - Nick Kent, Aveso



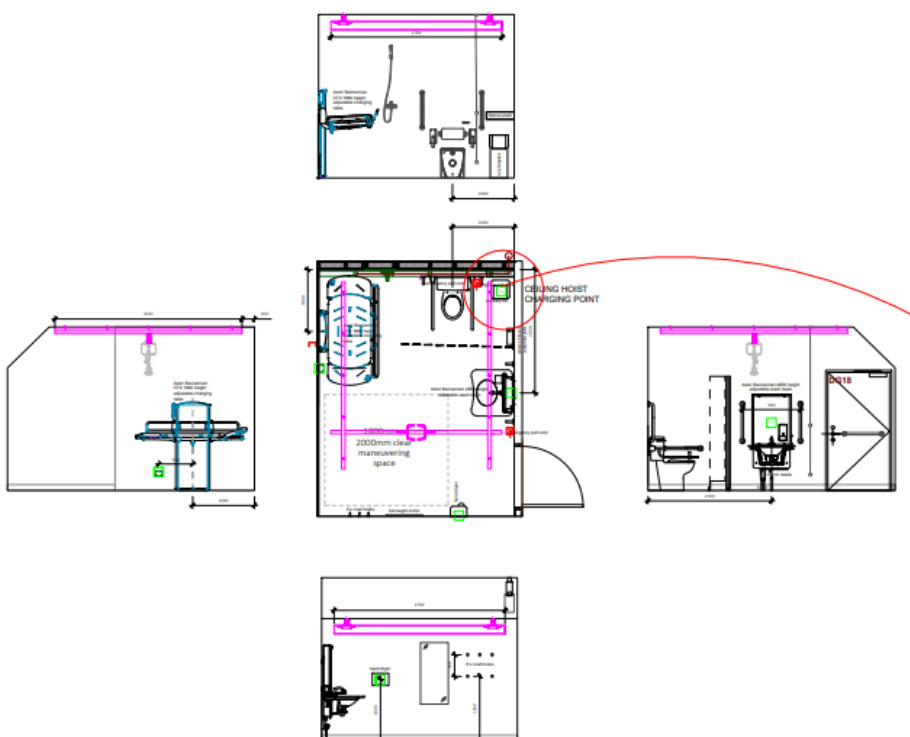
### Main Equipment:

- Astor CTX2-CP Changing Table
- Astor OT200 Over Head Hoist
- Astor ABW-CP Height Adjustable Wash Basin
- Peninsular Toilet
- Shower
- Wall Mounted Privacy Screen
- Accessory Items

[Visit our website for the full range of equipment available](#)

## TECHNICAL

### Layout



### The perfect Changing Table for showering ...

In facilities where a shower is needed, the Astor CTX2-CP is a perfect choice with its integrated water collection tray and drain hose to direct waste water directly to a floor drain.

[Visit our website for CAD/BIM files, and product spec sheets](#)