

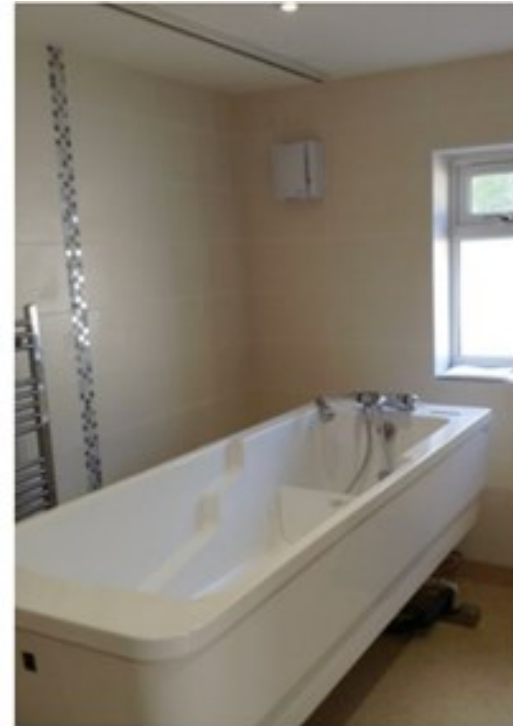
Astor Bannerman working closely with OTs and families for a new build renovation



Ceiling Hoist in Child's Bedroom



View through inter-connecting rooms



Height Adjustable Bath with lights, air and music

BACKGROUND

Astor Bannerman are proud to have completed a large project in the South West of England, which saw the renovation of a bungalow for a disabled child and family.

Astor Bannerman were involved with all stages of the building process from architects consultation and CAD drawings to full room assessments and training on all products.

The build needed to accommodate for three interconnecting rooms from the child's bedroom through to the bathroom and the hydrotherapy suite. This meant that our technical team needed to consider a number of structural and practical elements including the structure of the ceiling, ceiling heights, ability to close areas off and the structure of the XY system for each room.

As a Case Management custom build project, we were able to offer suggestions for room layout and best practice for using the equipment right from the start.

Visit the [Astor Bannerman website](#) to find out more information about our Case Management offerings

SOLUTION

Our tailored solution for the bungalow consisted of:

- Ceiling Hoist XY System for 3 Rooms Including Gate System
- Hi-Lo Shower Trolley
- Hi-Lo Bath with Lights, Air Spa and Music
- Hi-Lo Sink with Mirror and Infra-Red Taps

[Visit our website
for the full range
of equipment
available](#)

We maintained a close relationship with the OT, Builder and Parents throughout the building and fitting process to ensure that the equipment was up to their expectations.



TECHNICAL

- The Ceiling Hoist System charges itself whenever it is in use, so that down time is never a problem; this reduces running costs by up to 25%. The system can notably be used either manually or via the hand control system depending on the amount of support given by carers.
- Positioning of the track is critical for minimal manual handling. Astor Bannerman technicians can help to design the rooms to optimum effect to reduce transfers. Our discreet bracket-less track can be installed on the ceiling or walls without drawing attention to the structure. This is a particularly attractive feature for family environments.
- A Ceiling Hoisting XY system such as this is often used in bathrooms where full room coverage is required for many points such as toileting, washing and drying. Being able to hoist from bed to bath to shower trolley reduces the amount of time spent by carer lifting the user, which reduces ergonomic concerns for the carer.